

*Permanent Walls That Move®*



# SERIES 225

*Flat Profile*



*Permanent Walls That Move®*

---

---

## PRODUCT DETAILS AND SPECIFICATIONS

### ENVIRONMENTAL:

The E2 Walls, Inc. Series 225 Movable Wall System is constructed using ecologically sound materials and manufacturing processes. The Series 225 Movable Wall System may contribute to LEED (Leadership in Energy and Environmental Design) certification as part of a comprehensive process dedicated to sustainable site planning, water efficiency, energy efficiency, material conservation and overall environmental quality. Series 225 Movable Wall System is designed for sustainability and can be relocated many times throughout the life of a building. This greatly reduces construction landfill debris from a job site while reducing construction schedules. Series 225 Movable Wall System helps to minimize the office footprint by saving up to fifty percent of floor space required for conventional construction. Additionally, glass options bring natural daylight into the interior space through the use of Series 225, Chair Rail, and Full Height Glass fronts.

### PRODUCT:

The E2 Walls, Inc. Series 225 Movable Wall System is a unique 24" wide all-gypsum unitized panel system with a (STC-37) sound rating; the panels can be manufactured to a maximum height of 12'-0". The panels are pre-finished in our manufacturing facility and can utilize a wide variety of Eco-Friendly vinyl and fabric wall coverings. All system components are extruded aluminum and have an anodized or paint finish on all exposed surfaces. The system utilizes a 4" rigid vinyl snap-on reusable base. The system incorporates Clerestory, Chair Rail, Sidelights, and Full Height Glass. The system also has the capability of providing Eco-Friendly pre-finished wood or glass, hinged or sliding door units. The system is 90 to 100 percent reusable.

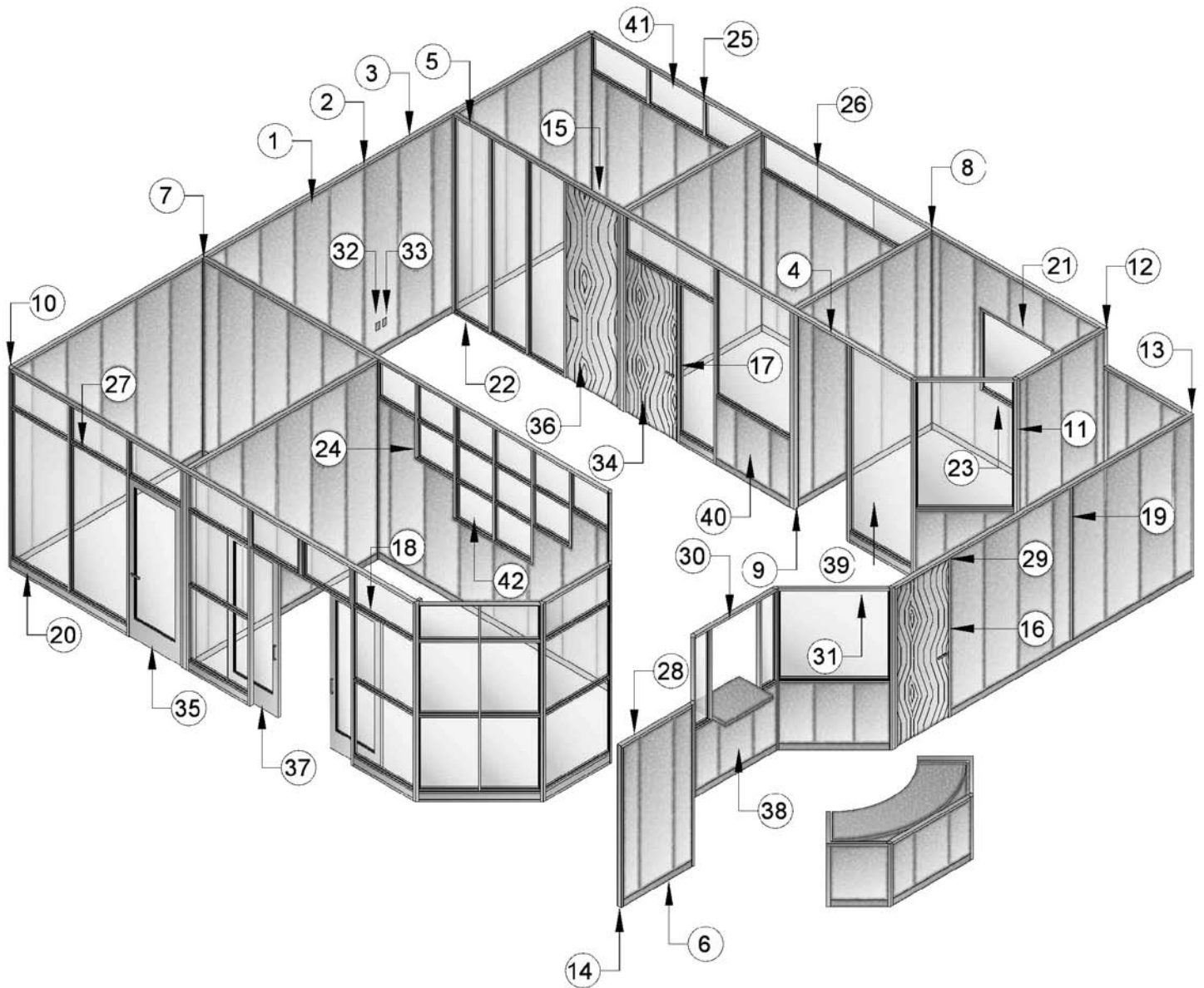
### SERVICE:

E2 Walls, Inc. is a service company committed to maintain a strategic inventory of raw materials. We are able to manufacture and deliver high quality products quickly, efficiently and economically. This "Service" commitment is continued by providing the initial, ongoing and future installations when changes are required. Our installation crews are highly trained in delivering and servicing our products.

---

## ISOMETRIC ILLUSTRATION

### SERIES 225 2¼" MOVABLE PARTITION FLAT PROFILE

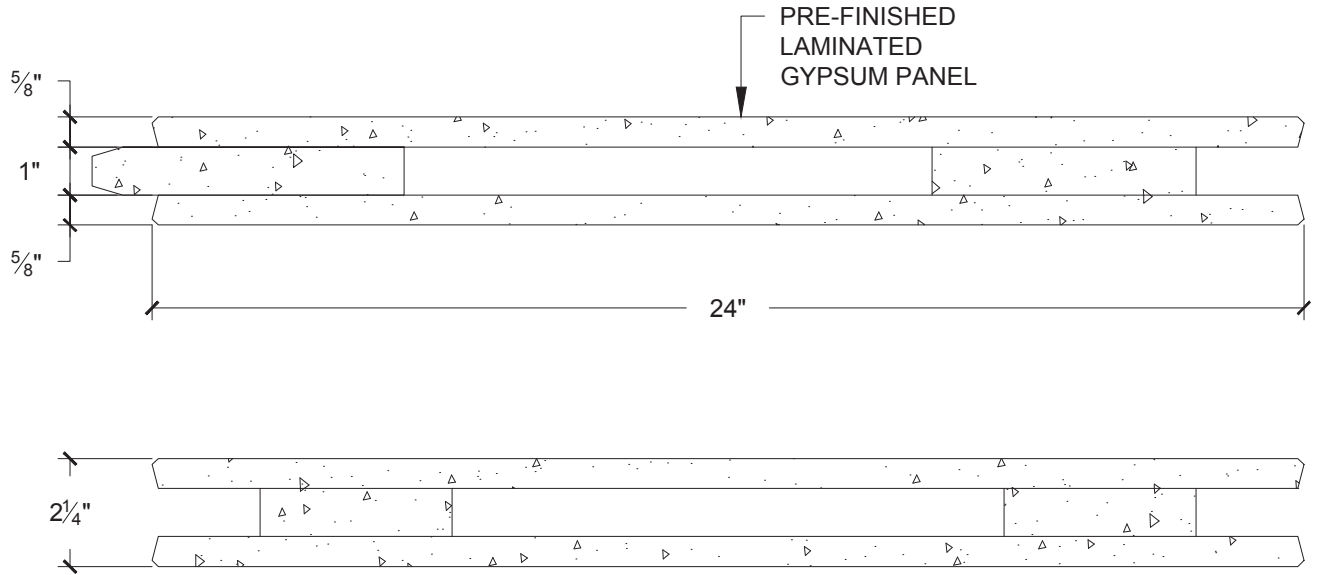


Numbers in callouts refer to detail numbers on the pages that follow.

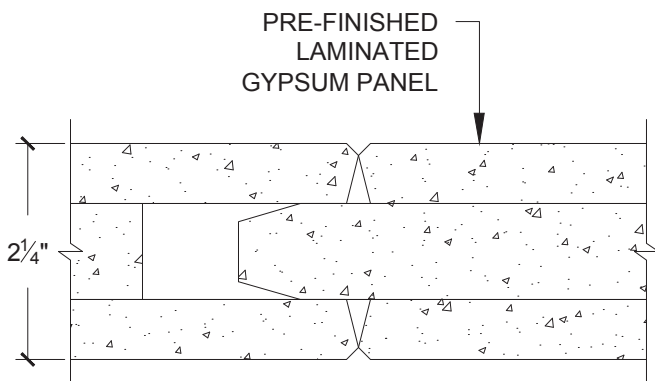
Note: The isometric illustration shown is for reference only. It depicts many common conditions, but not every condition is illustrated. Glazing is optional.

# TYPICAL DETAILS

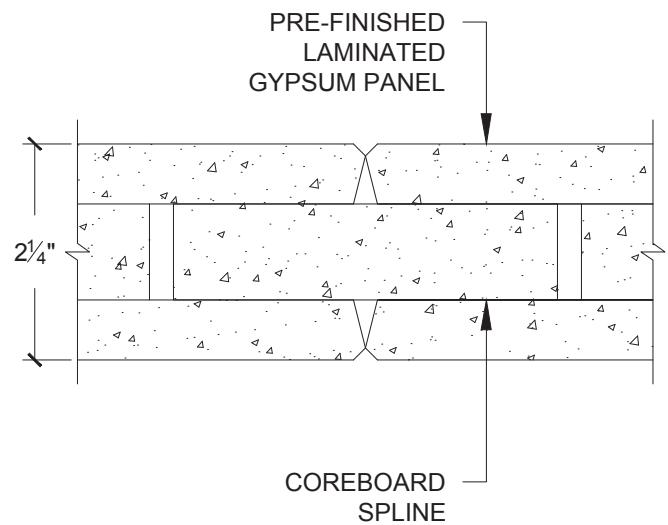
## DETAIL 1 UNITIZED PANEL SECTION



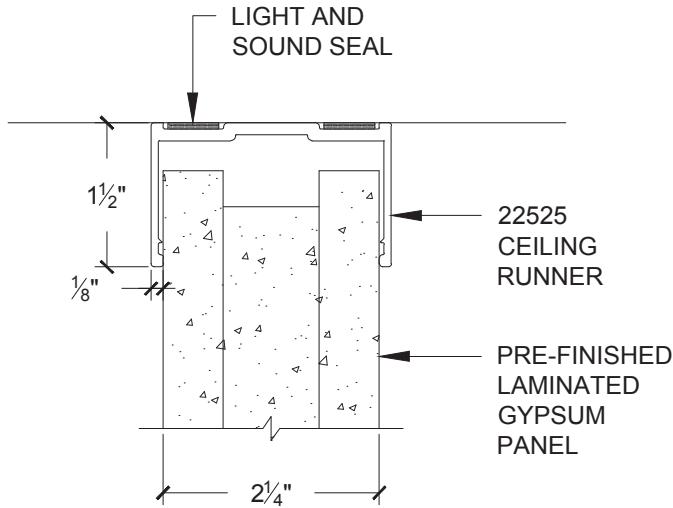
## DETAIL 2 TONGUE & GROOVE PANEL CONNECTION



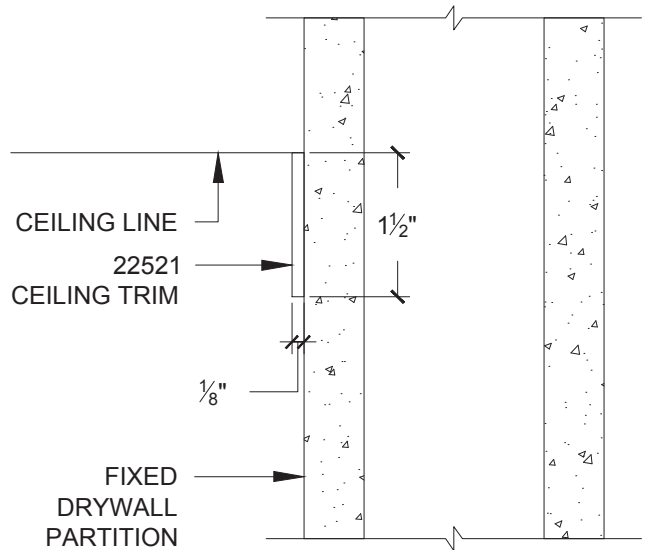
## DETAIL 2A DOUBLE GROOVE PANEL WITH COREBOARD SPLINE (OPTIONAL)



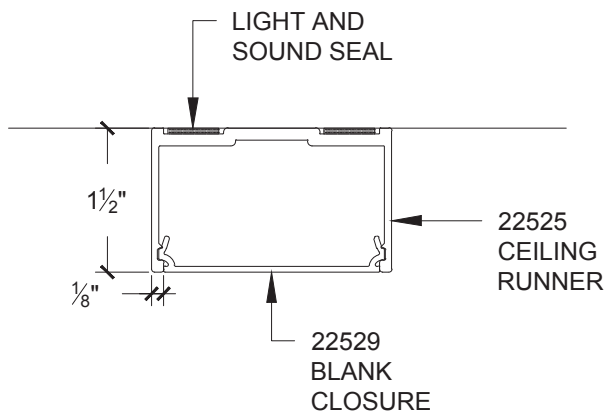
DETAIL 3  
CEILING RUNNER



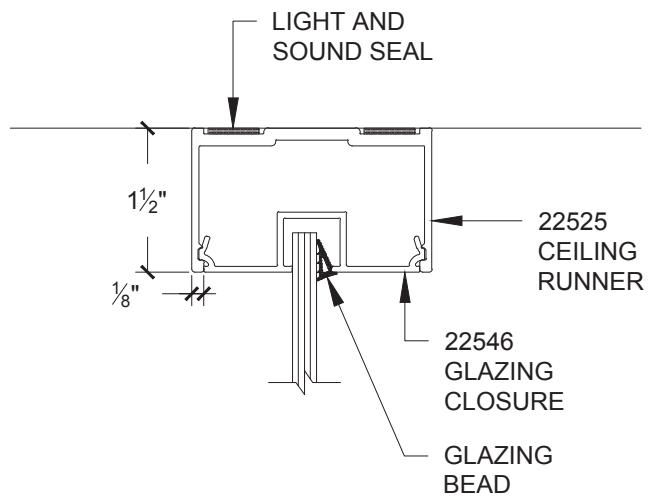
DETAIL 3A  
CEILING TRIM



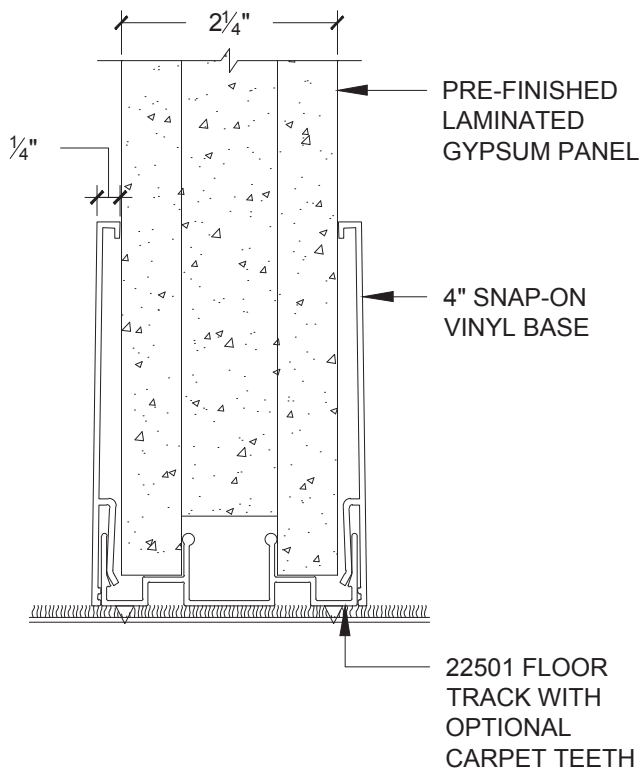
DETAIL 4  
CEILING RUNNER WITH BLANK CLOSURE



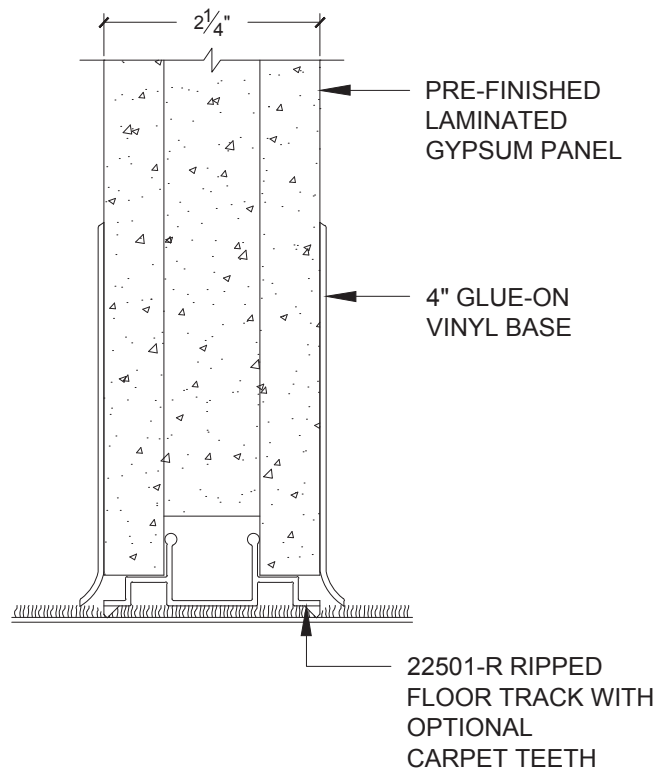
DETAIL 5  
CEILING RUNNER WITH GLAZING CLOSURE



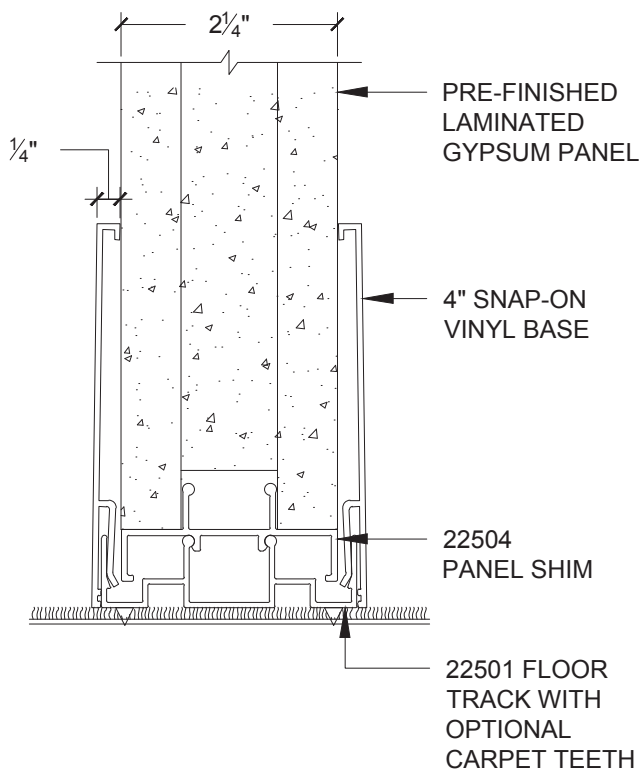
DETAIL 6  
FLOOR TRACK WITH SNAP-ON BASE



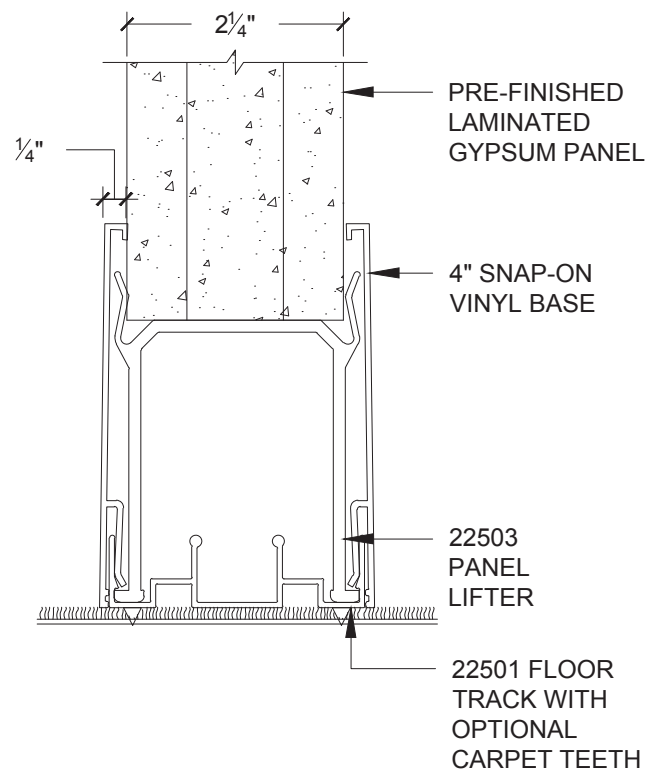
DETAIL 6A  
FLOOR TRACK WITH GLUE-ON BASE (OPTIONAL)



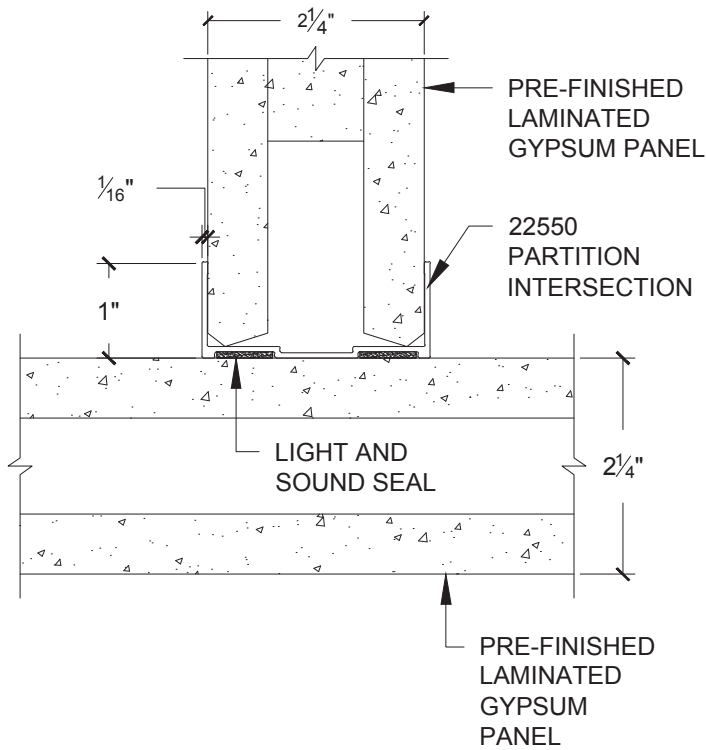
DETAIL 6B  
FLOOR TRACK WITH PANEL SHIM



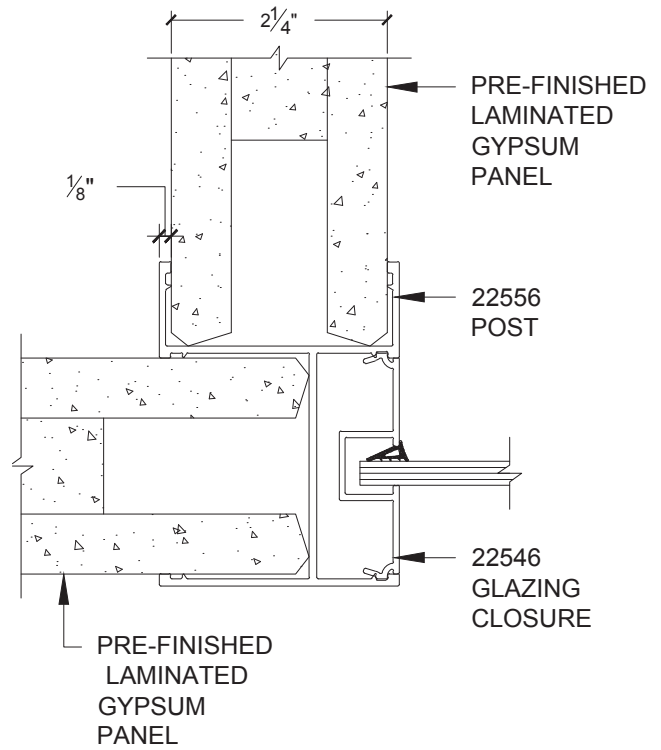
DETAIL 6C  
FLOOR TRACK WITH 3" PANEL LIFTER



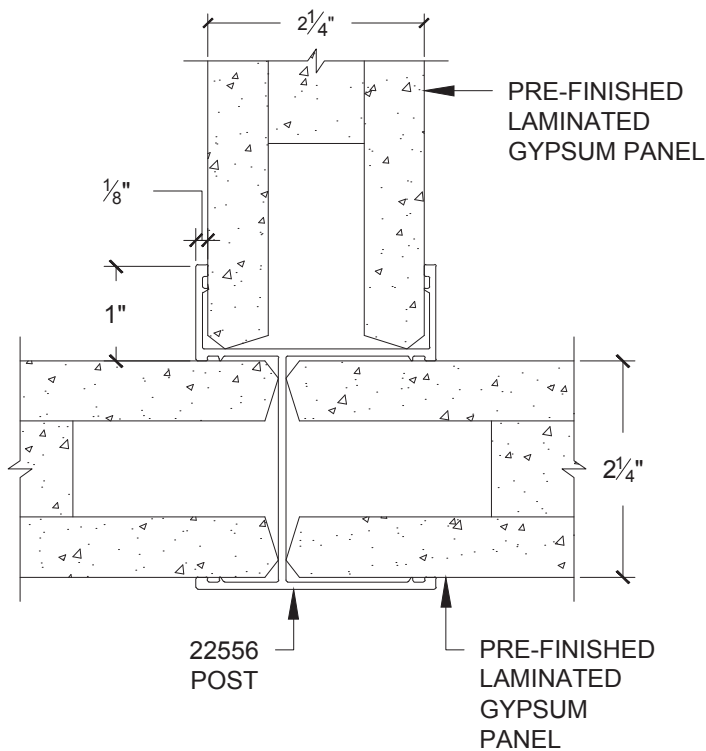
DETAIL 7  
PANEL INTERSECTION



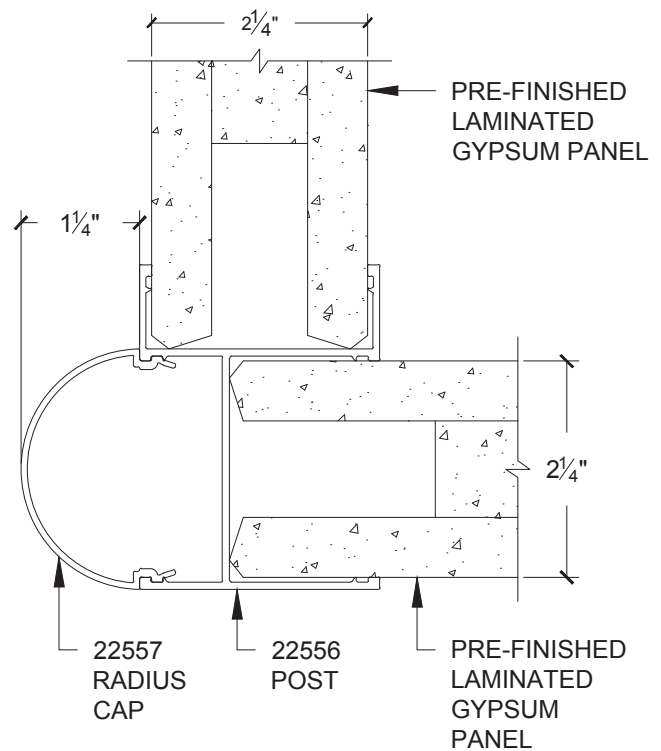
DETAIL 8  
POST INTERSECTION



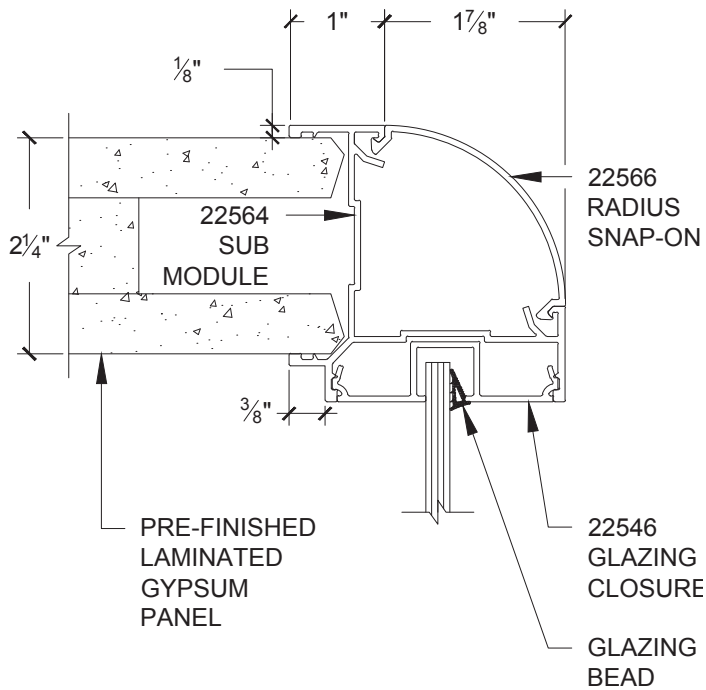
DETAIL 8A  
3-WAY POST INTERSECTION



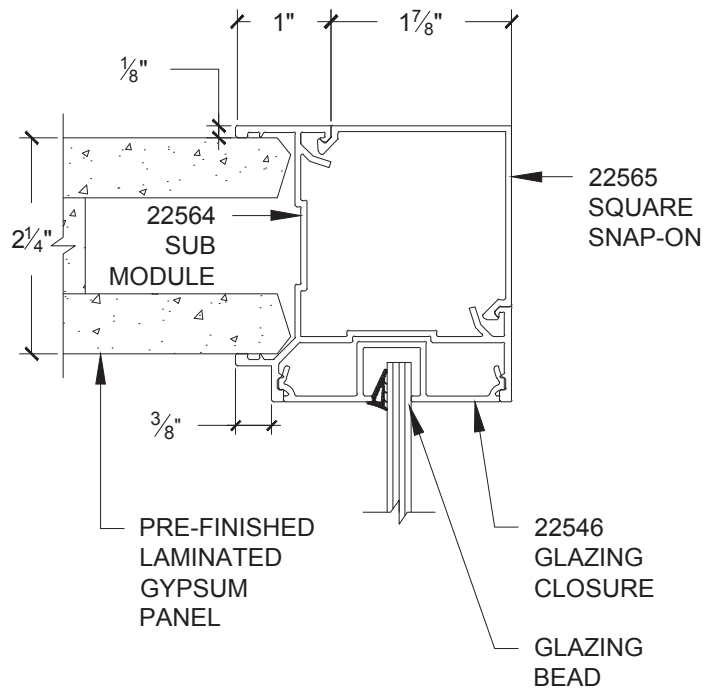
DETAIL 9  
POST INTERSECTION WITH RADIUS END CAP



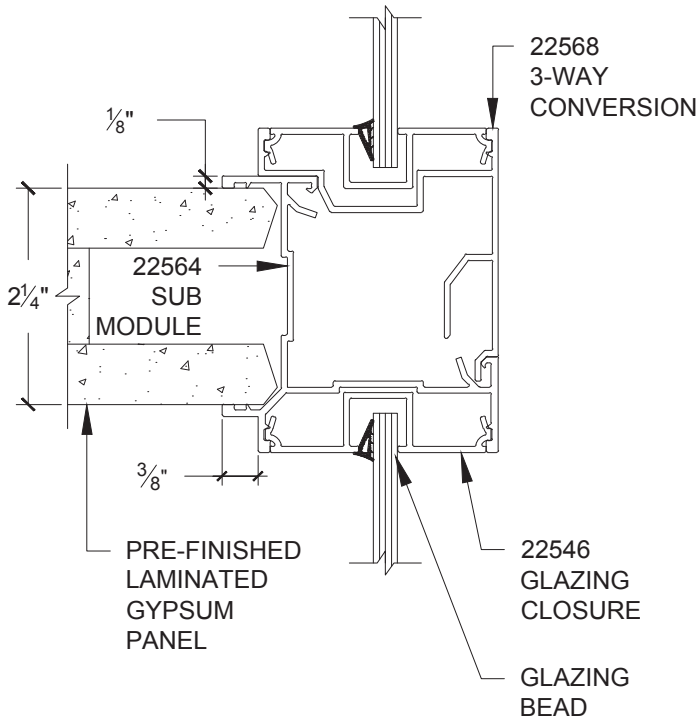
DETAIL 10  
90° SUB MODULE CORNER WITH RADIUS SNAP-ON



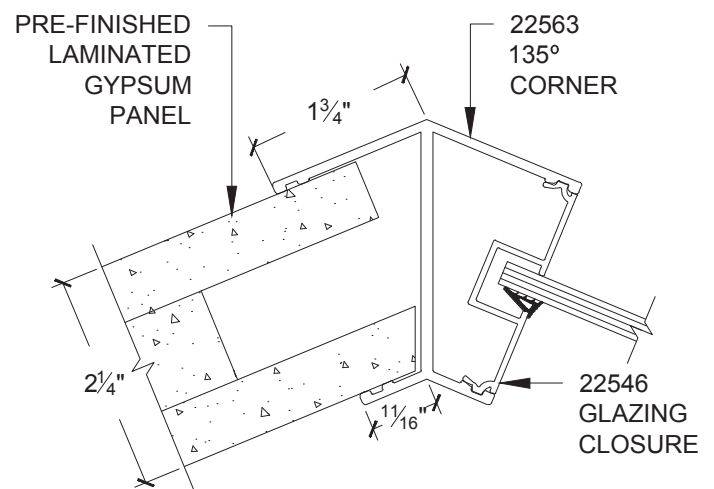
DETAIL 10A  
90° SUB MODULE CORNER WITH SQUARE SNAP-ON



DETAIL 10B  
90° SUB MODULE CORNER CONVERTED TO 3-WAY INTERSECTION

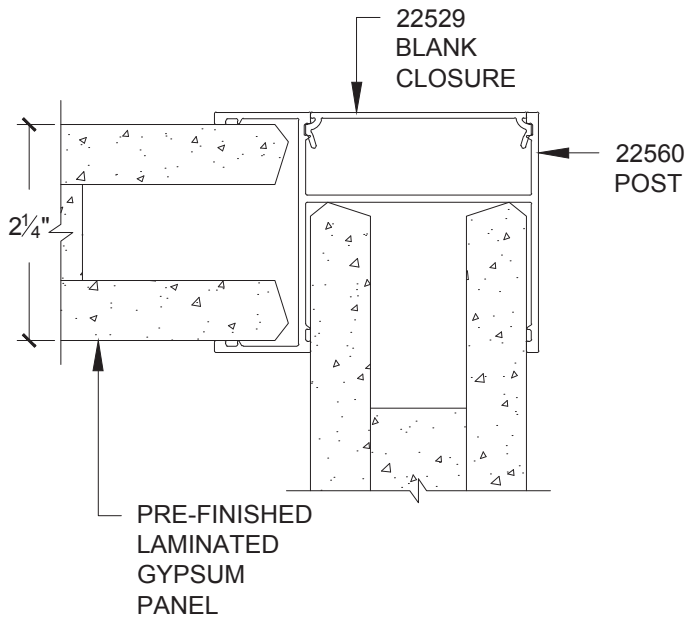


DETAIL 11  
135° CORNER WITH GLAZING CLOSURE

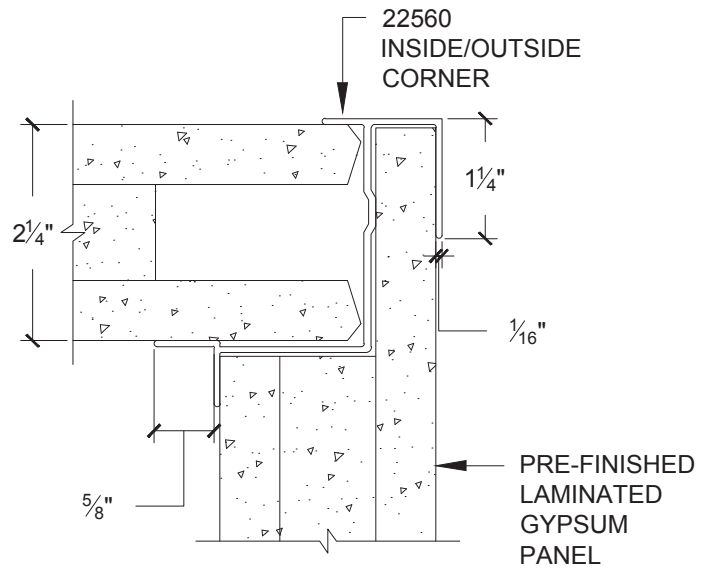




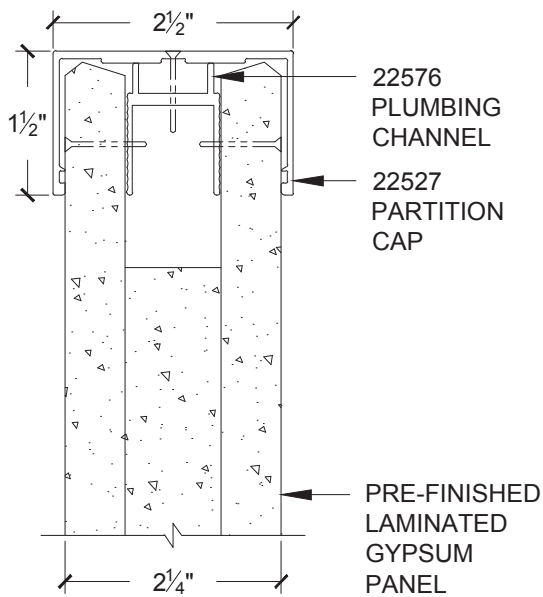
DETAIL 12  
POST CORNER WITH BLANK CLOSURE



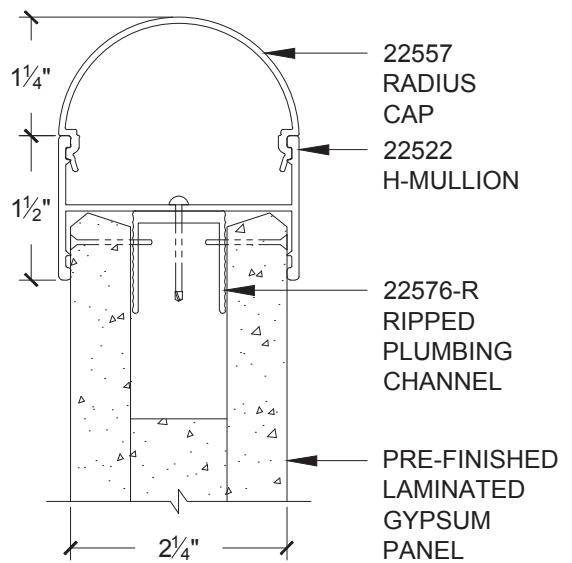
DETAIL 13  
90° CORNER



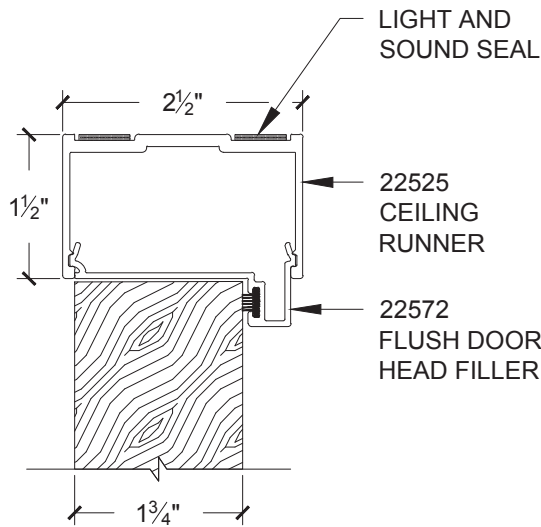
DETAIL 14  
PARTITION END CAP



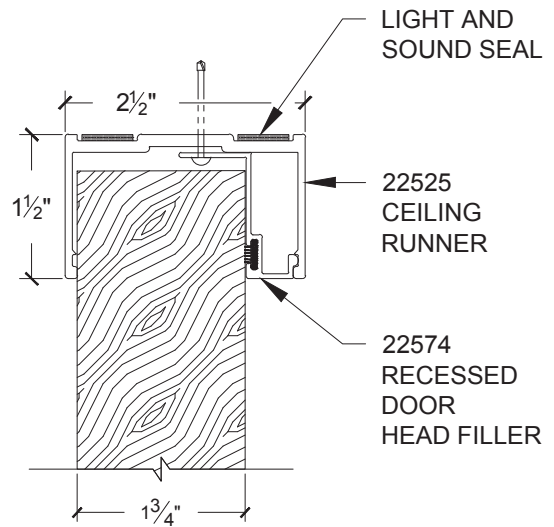
DETAIL 14A  
H-MULLION WITH RADIUS END CAP



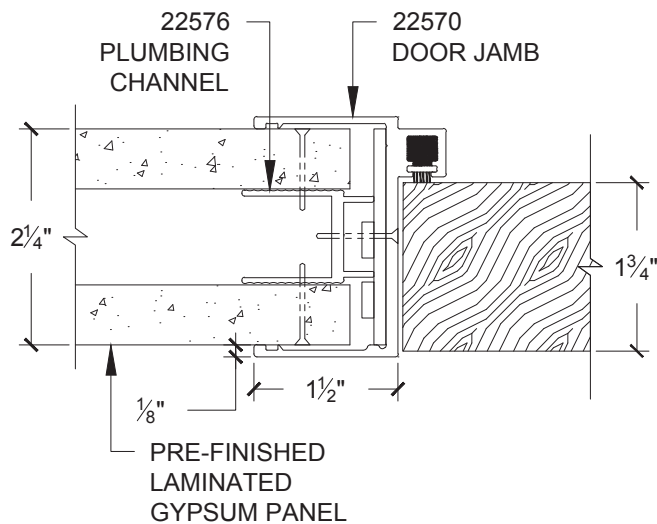
DETAIL 15  
 CEILING RUNNER WITH FLUSH DOOR  
 HEAD FILLER



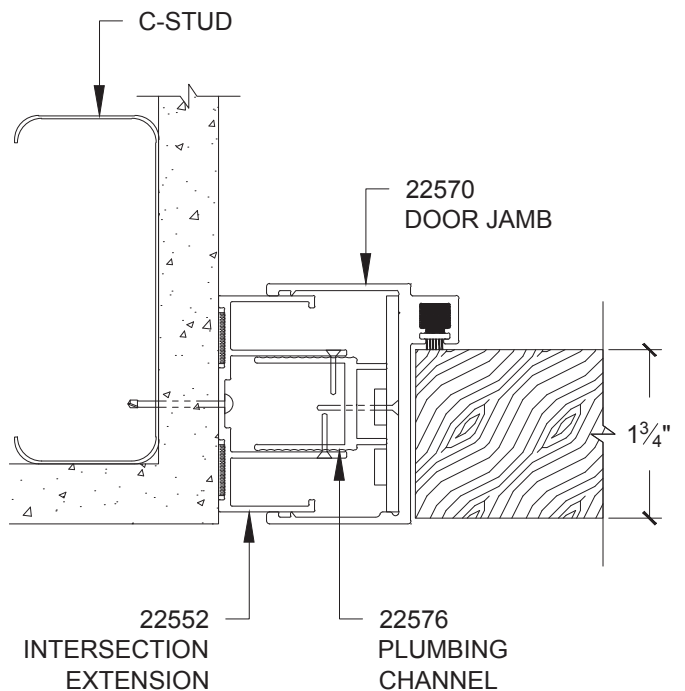
DETAIL 15A  
 CEILING RUNNER WITH RECESSED DOOR  
 HEAD FILLER



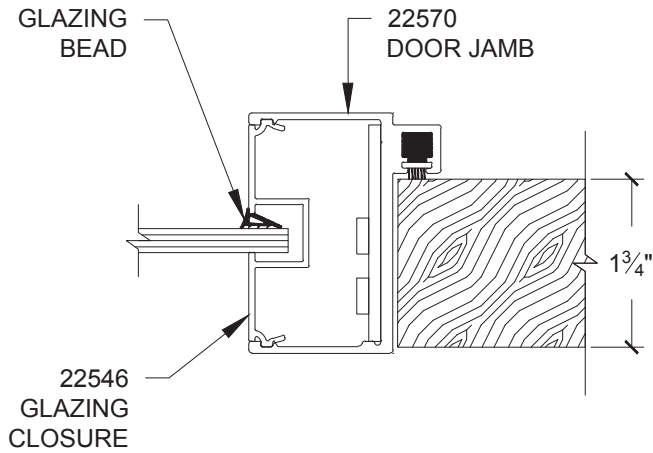
DETAIL 16  
 DOOR JAMB WITH GYPSUM PANEL



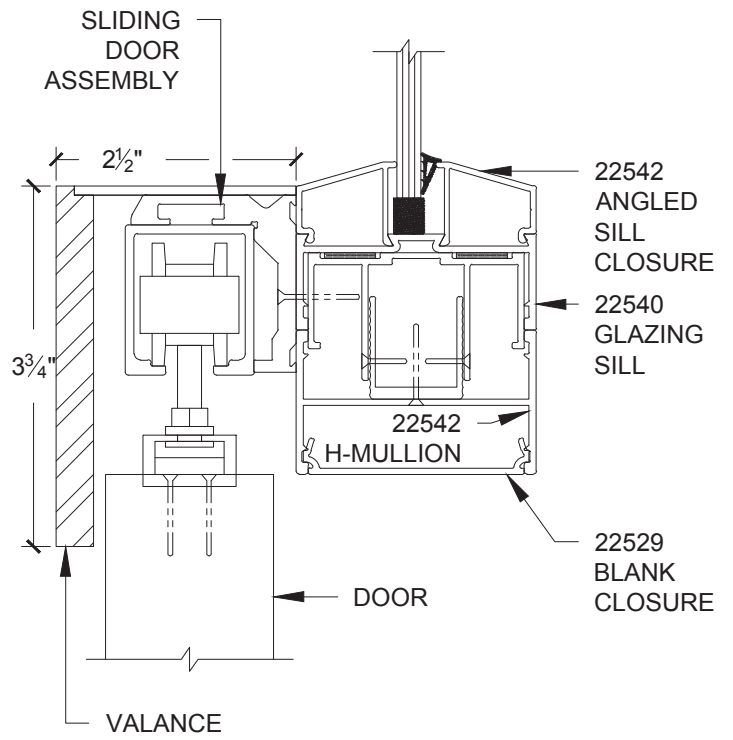
DETAIL 16A  
 DOOR JAMB WITH INTERSECTION  
 EXTENSION AT DRYWALL



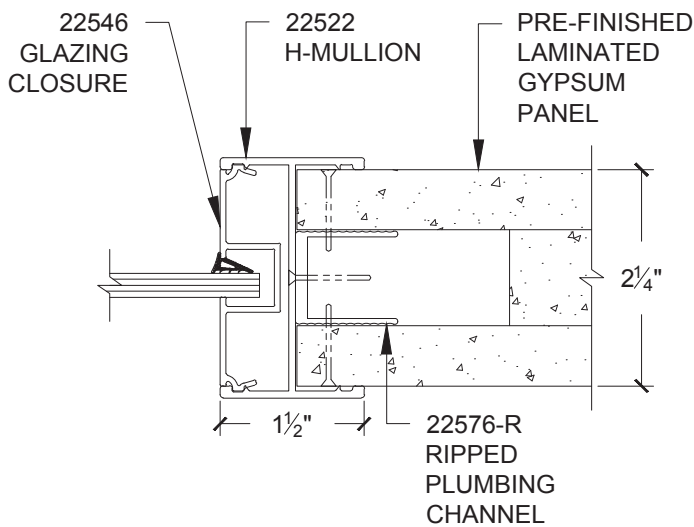
DETAIL 17  
DOOR JAMB WITH GLAZING CLOSURE



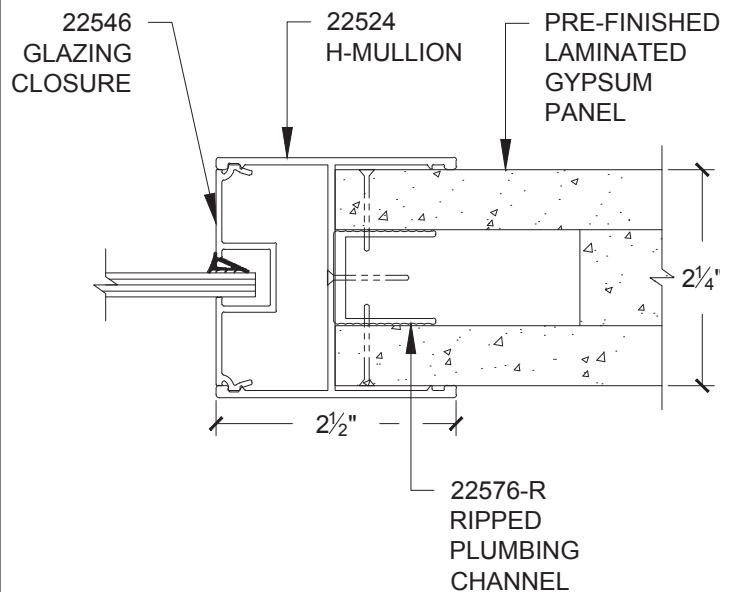
DETAIL 18  
SLIDING DOOR HARDWARE



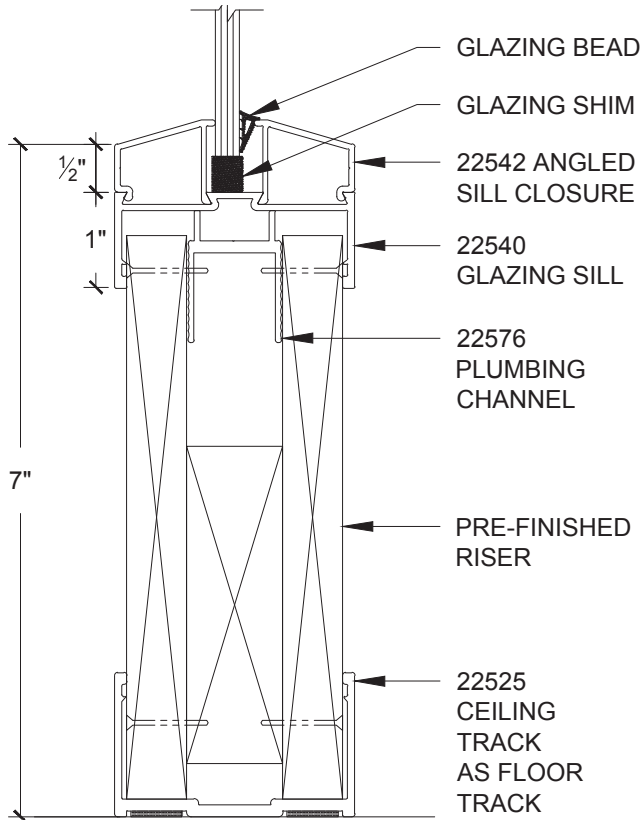
DETAIL 19  
1 1/2" H-MULLION



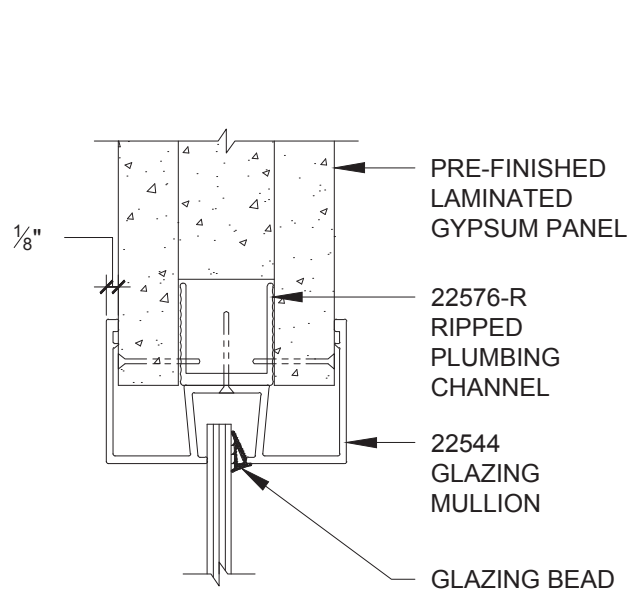
DETAIL 19A  
2 1/2" H-MULLION



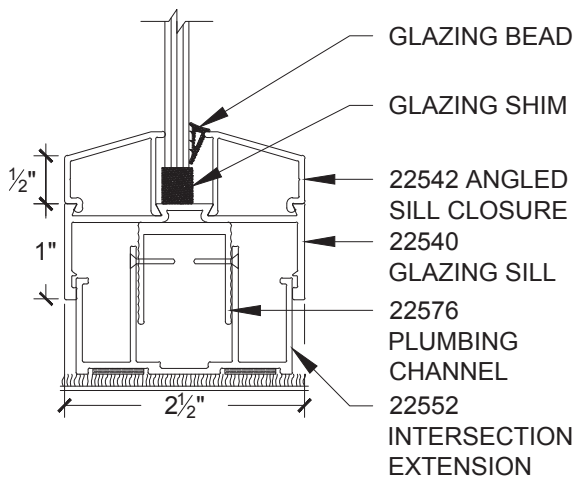
DETAIL 20  
STANDARD GLAZING RISER



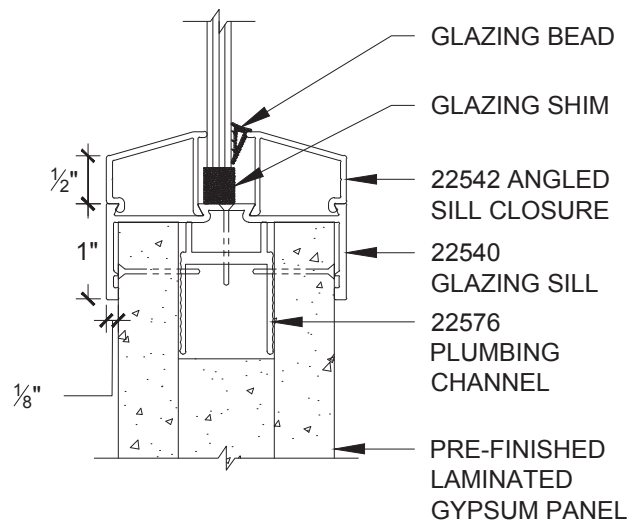
DETAIL 21  
GLAZING HEAD WITH GYPSUM PANEL



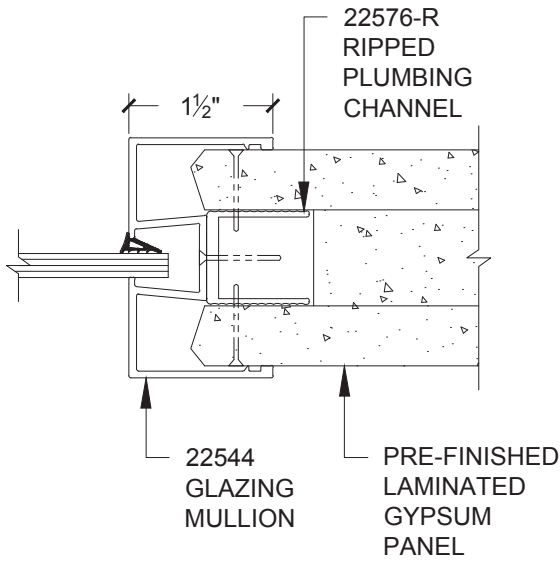
DETAIL 22  
GLAZING SILL AT FLOORLINE



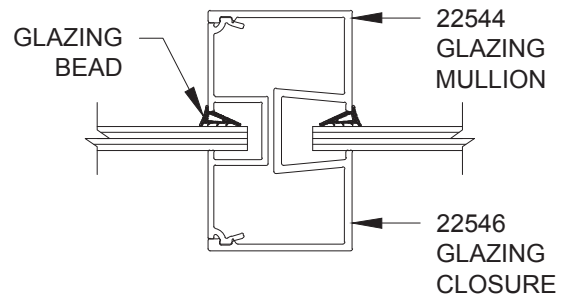
DETAIL 23  
GLAZING SILL WITH GYPSUM PANEL



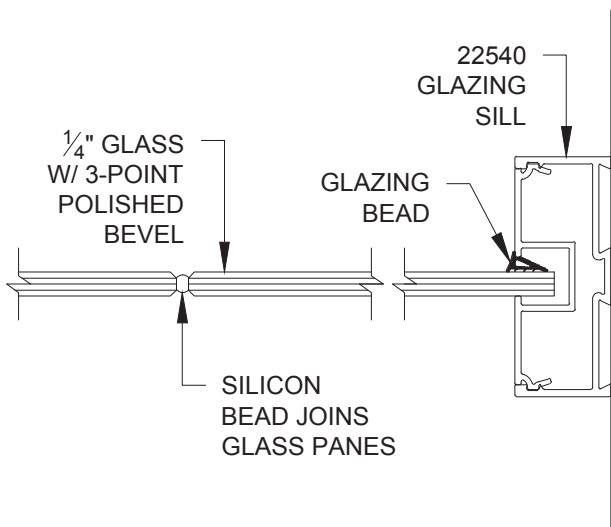
DETAIL 24  
GLAZING MULLION WITH GYPSUM PANEL



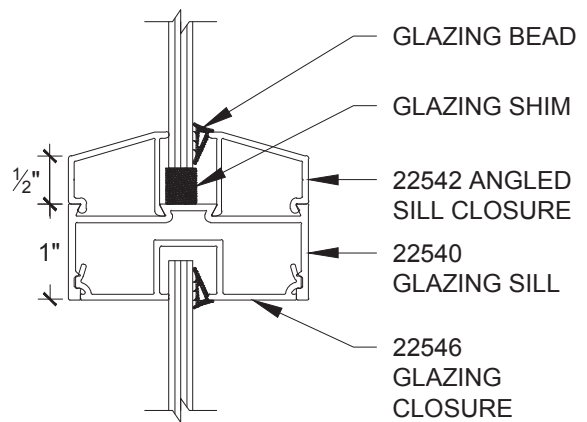
DETAIL 25  
GLAZING MULLION WITH GLAZING  
CLOSURE



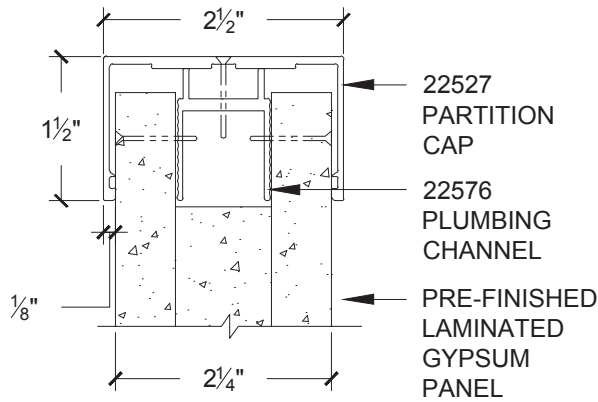
DETAIL 26  
SEAMLESS (BUTT-JOINT) GLAZING IN  
LIEU OF MULLIONS



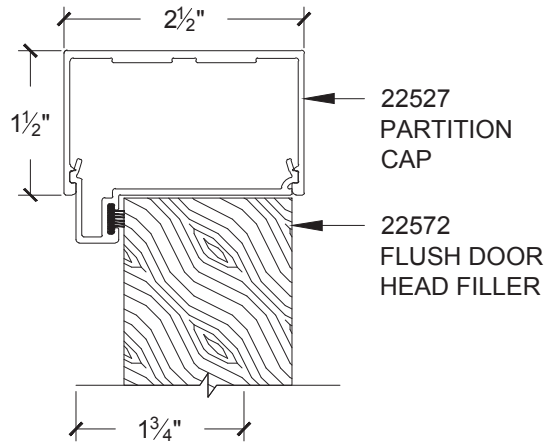
DETAIL 27  
HORIZONTAL GLAZING SILL WITH  
GLAZING CLOSURE



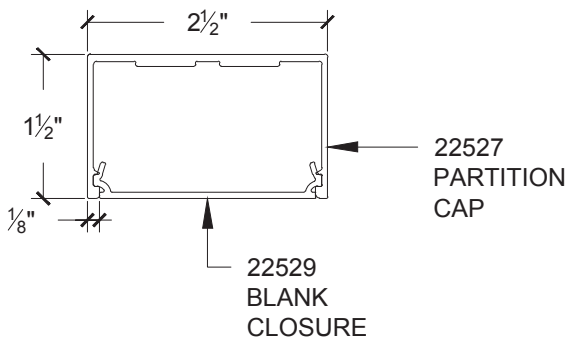
DETAIL 28  
CORNICE HEIGHT PARTITION CAP



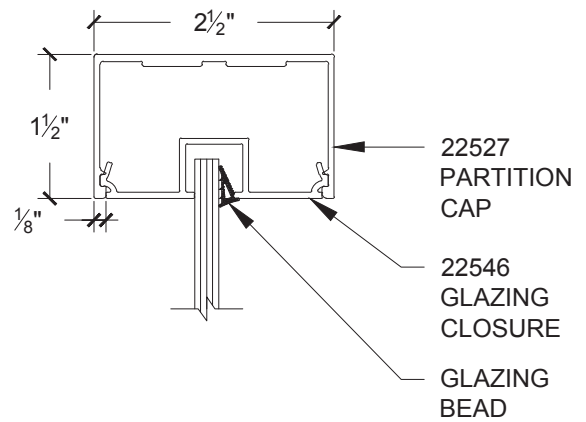
DETAIL 29  
CORNICE HEIGHT PARTITION CAP WITH FLUSH DOOR HEAD FILLER



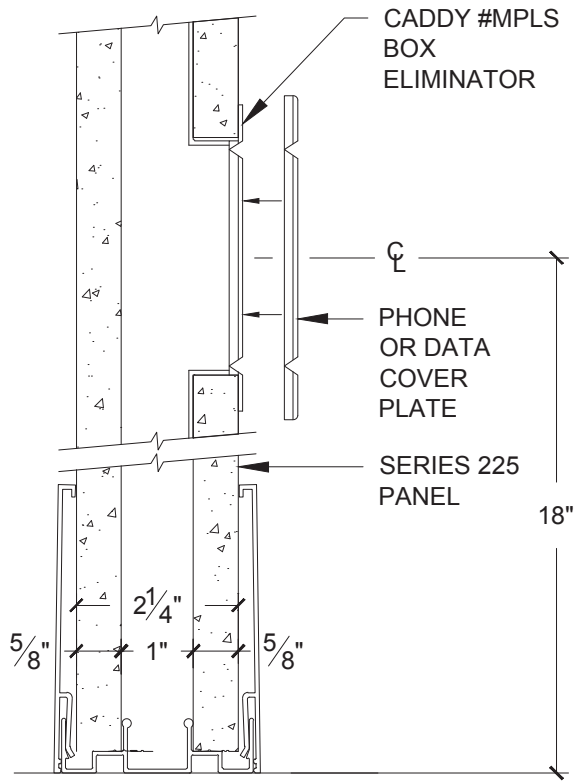
DETAIL 30  
CORNICE HEIGHT PARTITION CAP WITH BLANK CLOSURE



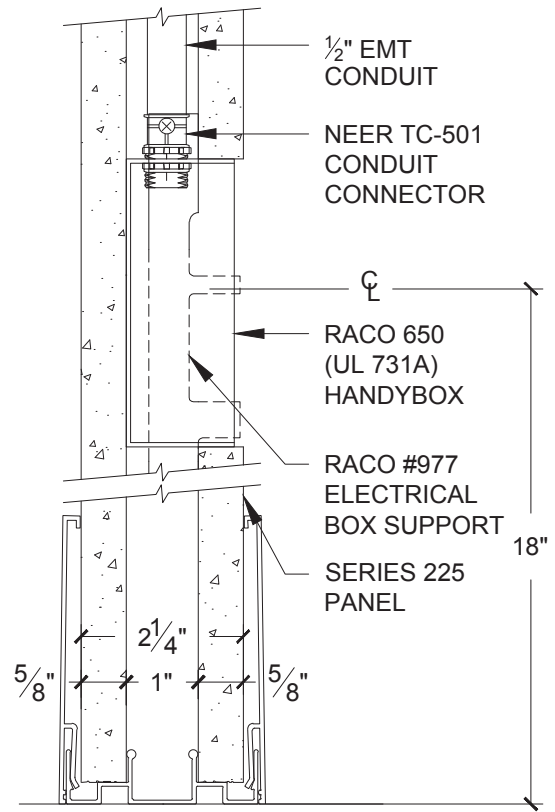
DETAIL 31  
CORNICE HEIGHT PARTITION CAP WITH GLAZING CLOSURE



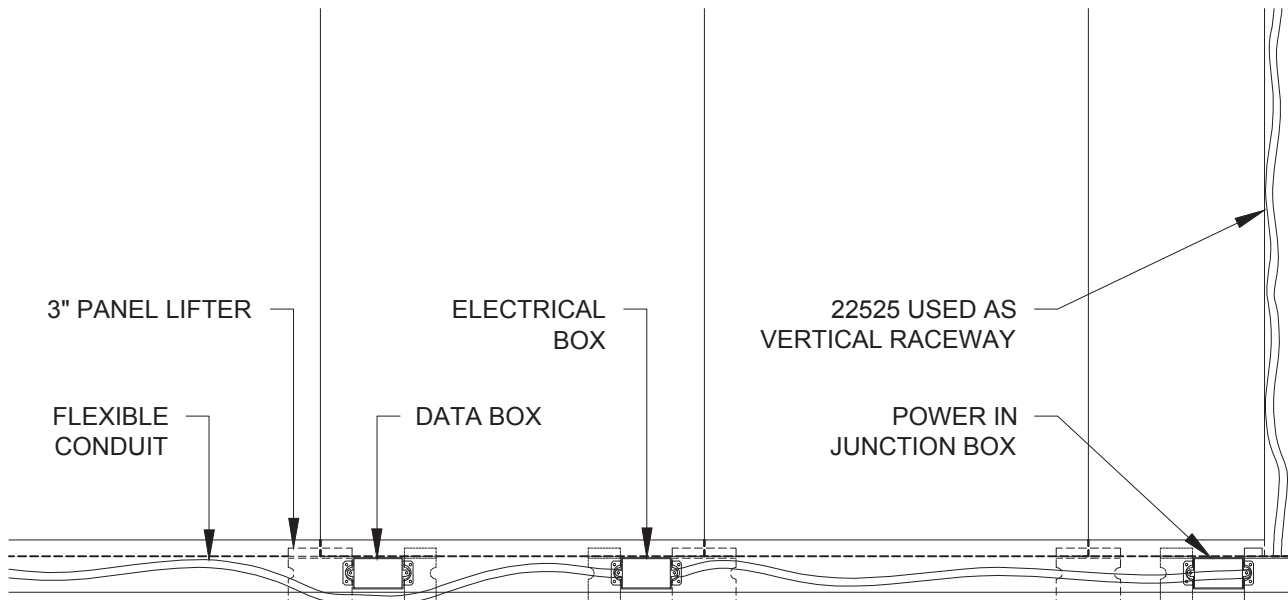
DETAIL 32  
PHONE/DATA ROUGH-IN WITH BOX  
ELIMINATOR: SECTION VIEW



DETAIL 33  
ELECTRICAL ROUGH-IN: SECTION VIEW

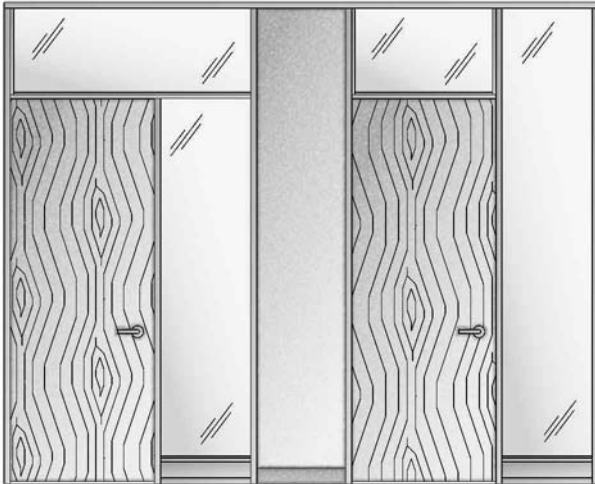


DETAIL 33A  
HORIZONTAL WIRING RACEWAY FOR BASE ACCESSED RECEPTACLES



# ELEVATIONS

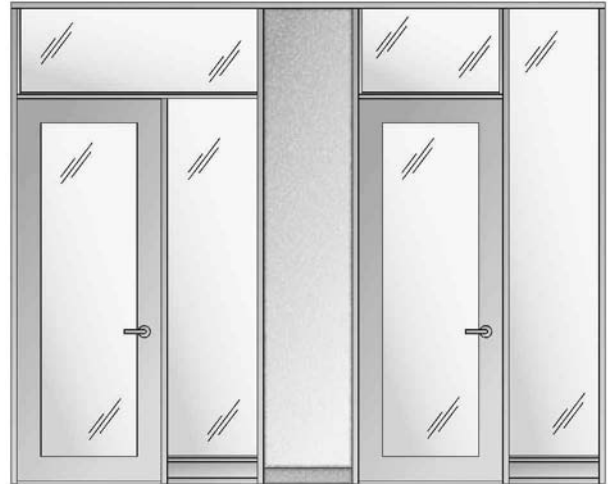
**DETAIL 34**  
**WOOD DOOR & GLASS TRANSOM W/  
 SIDE LIGHT OPTIONS**



**A. WOOD DOOR W/  
 CLERESTORY  
 TRANSOM & SIDE  
 LIGHT**

**B. WOOD DOOR W/  
 GLASS TRANSOM &  
 FULL HEIGHT  
 SIDE LIGHT**

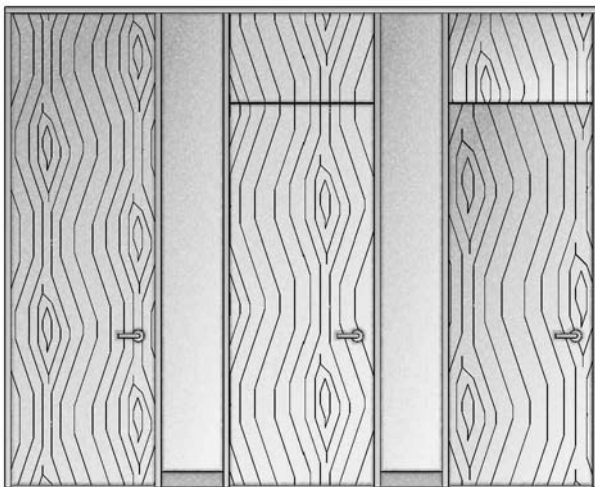
**DETAIL 35**  
**ALUMINUM GLASS DOOR WITH GLASS  
 TRANSOM & SIDE LIGHT OPTIONS**



**A. ALUMINUM  
 GLASS DOOR W/  
 CLERESTORY  
 TRANSOM & SIDE  
 LIGHT**

**B. ALUMINUM  
 GLASS DOOR W/  
 GLASS TRANSOM  
 & FULL HEIGHT  
 SIDE LIGHT**

**DETAIL 36**  
**FULL HEIGHT WOOD DOOR & WOOD  
 TRANSOM W/ SIDE LIGHT OPTIONS**

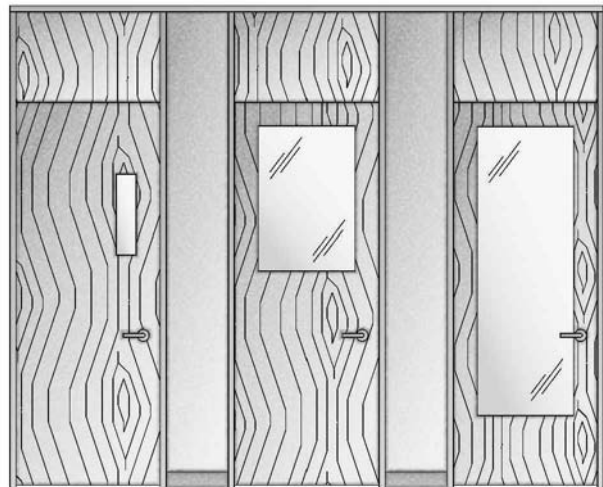


**A. FULL HEIGHT  
 WOOD DOOR**

**B. WOOD DOOR  
 W/ MATCHING  
 WOOD  
 TRANSOM**

**C. WOOD  
 DOOR W/ NON-  
 MATCHING  
 WOOD  
 TRANSOM**

**DETAIL 36A**  
**WOOD DOOR VISION KIT OPTIONS**



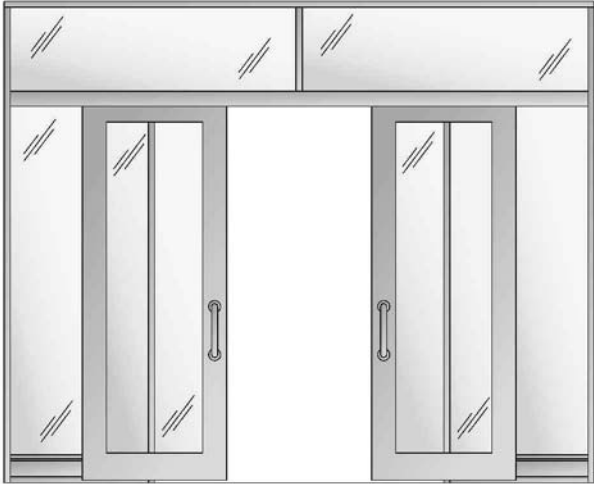
**A. VISION KIT**

**B. VISION KIT  
 (HALF-GLASS)**

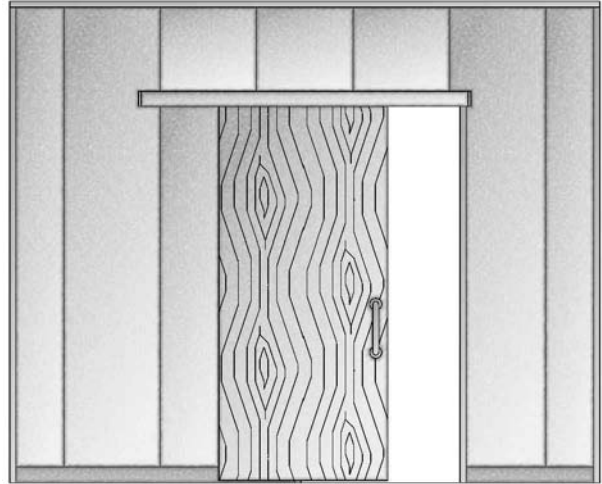
**C. VISION KIT  
 (FULL)**



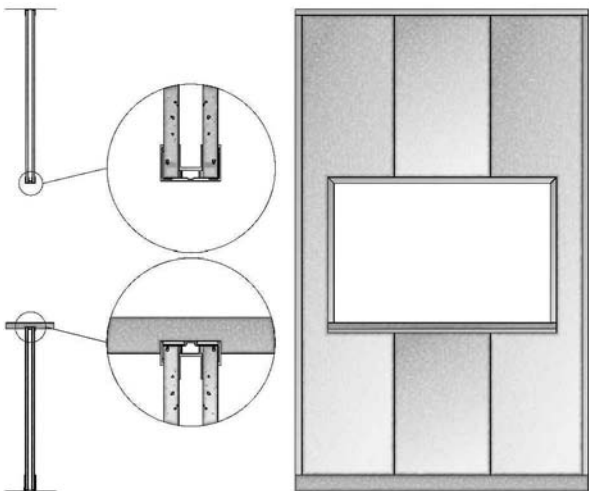
DETAIL 37  
 SLIDING DOUBLE ALUMINUM GLASS  
 DOORS W/ VALANCE, CLERESTORY  
 TRANSOM, & SIDE LIGHTS



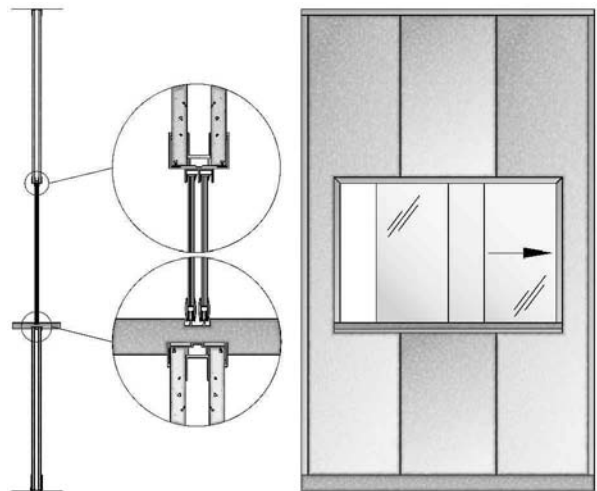
DETAIL 37A  
 SIMPLE SLIDING BARN DOOR IN  
 GYPSUM WALL



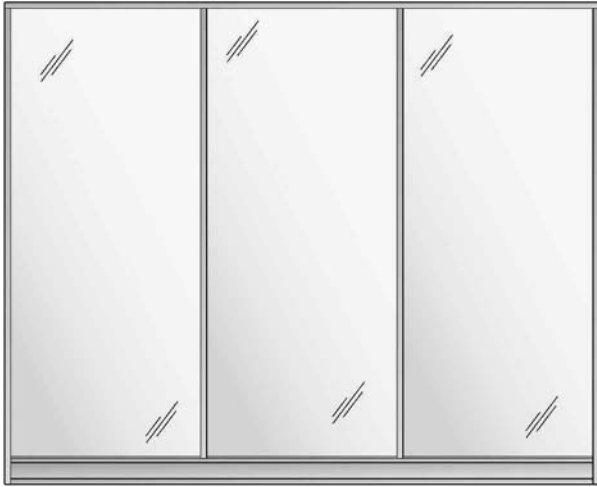
DETAIL 38  
 OPEN PASS-THRU ELEVATION



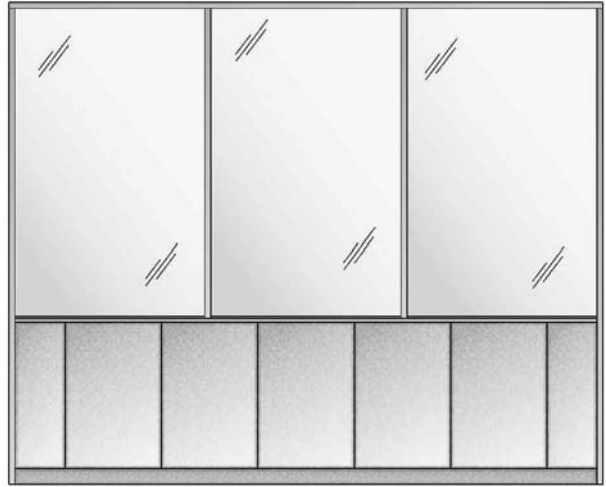
DETAIL 38A  
 PASS-THRU WITH SLIDING GLASS KIT  
 ELEVATION



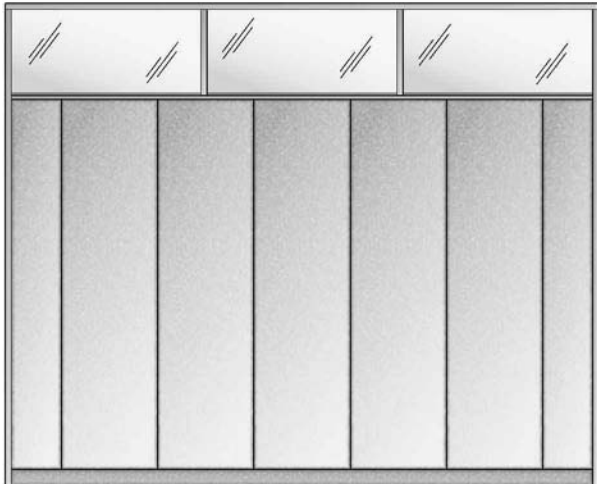
DETAIL 39  
FULL HEIGHT GLAZING ELEVATION



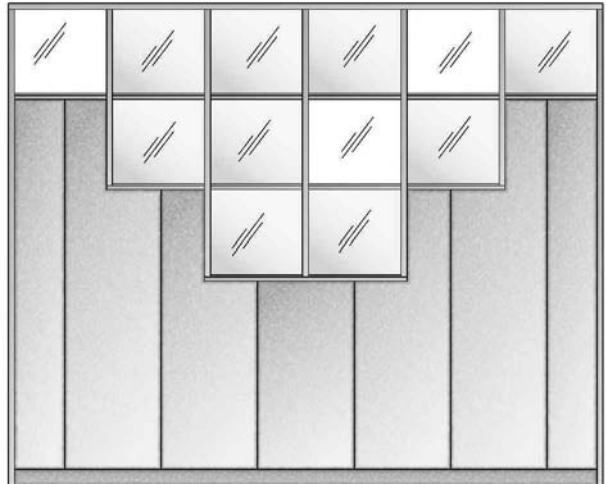
DETAIL 40  
CHAIR RAIL GLAZING ELEVATION



DETAIL 41  
CLERESTORY GLAZING ELEVATION



DETAIL 42  
BOX GLAZING ELEVATION



## E2 WALLS SERIES 225 FLAT PROFILE SPECIFICATIONS

---

### GENERAL:

The partition contractor shall furnish all labor, materials, tools and equipment necessary for the complete furnishing and installation of all relocatable partitions as shown on the drawings and/or schedules and as specified in accordance with provisions of the contract documents.

All work and installation of relocatable partitions shall be completely coordinated with that of all other trades.

All supplementary or miscellaneous items, appurtenances and devices incidental to or necessary for a sound, secure and complete installation shall be furnished as part of this work.

Partition contractor shall furnish all cutouts for switches, receptacles and data.

All conduits, devices and wiring furnished and installed by others.

Partition contractor shall furnish and install wall with the finishes as specified or as shown on the finish schedule.

### QUALITY ASSURANCE:

Partition systems shall be installed by partition system contractor with minimum of five (5) years experience. Installers shall be thoroughly knowledgeable on installation of system and components.

### APPROVED MANUFACTURERS:

E2 WALLS, INC.  
TAMPA, FL  
(888) 816-9816

Suppliers wishing to bid relocatable partitions other than the one herein specified as equal may do so with prior approval. Written request for approval must be received by the architect- engineer-owner seven (7) days prior to bid date. It will be the supplier's responsibility to coordinate their product with all other work.

### JOB CONDITIONS:

Care will be exercised during installation to prevent any damage to the system and surrounding work already complete.

All work relating to floor finish materials and ceilings shall be complete before partition installation begins.

Coordinate work with other contractors to permit installation of electrical, data and communication systems.

General contractor shall furnish hoisting equipment and operating engineer at no expense to the partition contractor.

### ENVIRONMENTAL CONDITIONS:

Temperature within the building shall be above a constant minimum of 55° during erection of partition. When required, heat shall be furnished by the general contractor. Erection of the partition system shall not begin until building exterior provides complete protection from the outside weather. Gypsum face panels shall not be stored where they shall be subject to temperature, moisture or humidity extremes.

### MATERIALS:

Wall system shall include all components, base, wall panels, stops, ceiling and floor tracks, anchors for floor and ceiling, trims, door frames, doors, finish hardware and miscellaneous materials required for installation of wall system.

Wall face panels shall be 5/8" thick (15.8 mm), Type "X" gypsum board and ribs shall be 1" thick gypsum manufactured by United States Gypsum Corporation. Note: Face panels manufactured from inorganic mineral fiber-board are not acceptable. 1" thick gypsum ribs formed by laminating together two (2) or more pieces of gypsum are not acceptable.

Doors shall be 1 3/4" thick. Doors to be supplied by the partition manufacturer. See door schedule for type and size.

Base shall be 4" high, rigid snap-on vinyl, attached to continuous floor runner. Color to be selected by owner and/or representative.

Aluminum extrusions shall be extruded from either a 6063T5 controlled alloy or 5010 billet, or equal. Standard profile for extrusions is flat. Projected profile extrusions are also available. Ask your sales representative.

### EXTRUSION FINISHES:

ANODIZED:  
Standard Commercial Clear Anodized  
Medium Bronze Anodized

MECHANICAL:  
C1 - Directional finish applies to exposed surfaces prior to anodizing.

Standard paint finishes and custom colors are available.

---

## MISCELLANEOUS:

All attaching devices, screws, angles, clips, etc. shall be either aluminum, stainless steel or other non-corrosive material compatible with aluminum. Cadmium or zinc plated fasteners to be in accordance with ASTM Specifications #4-164-71 or A-165-71.

Two (2) sound and light seals,  $\frac{1}{8}$ " x  $\frac{1}{2}$ " polyurethane gasketing, shall be applied to all ceiling runners and all wall intersection extrusions.

Ceiling runner shall be pre-punched 12" O.C.

Where partitions are installed over carpeting; floor with carpet teeth shall be required, fasteners shall only be required at door openings.

## DOOR FRAMES:

Frames shall be factory pre-mortised for all hinges and lock strikes. Hinge and strike reinforcements shall be factory pre-drilled and tapped. Job-site tapping or the use of self-drilling screws is unacceptable.

Jamb legs are to be a minimum of one inch (1") longer than the specified length to allow for field cutting.

Light and sound seals shall be applied continuously around the perimeter of the head and jambs.

Angles and clips necessary to assure accurate joining of door head to jamb legs shall be factory installed.

All door frames and extrusions shall be delivered to the job-site paper-sleeved to protect the selected finishes and in cardboard cartons, securely banded, to protect against possible damage in transit.

## PARTITION CONSTRUCTION:

Relocatable partitions shall consist of E2 Walls' unitized gypsum board panels, factory laminated, 24" wide,  $2\frac{1}{4}$ " thick, and shall provide a minimum of 1" x 12" of internal space to accommodate utilities.

Two and one-quarter inch ( $2\frac{1}{4}$ ") thick chase wall unitized panels shall be faced both sides with  $\frac{5}{8}$ " beveled edge gypsum board on 1" x 6" gypsum core board spaced 12" apart.

Panels shall be laminated with non-flammable adhesive.

## PANEL FINISH:

The gypsum panel shall be pre-finished with vinyl, fabric, or other specified finish. Color and pattern to be selected by owner.

## POWER, DATA, AND COMMUNICATION SYSTEMS:

Partition system shall be capable of providing vertical and horizontal raceways.

All systems may be conventionally wired or cabled by use of the 12" wide vertical panel chase or vertical aluminum components, per local codes. The horizontal wireway is an optional feature that allows for the location of the systems in the base raceway. The raceway is accessible by the removal of the snap-on base.

A pre-engineered "quick" disconnect power system is available as an optional feature.

## TESTS:

### FIRE RATING - PANELS AND PANEL COMPONENTS:

Movable wall partitions, where indicated on the plans, shall have achieved a one-hour fire rating by an independent testing laboratory. (Limitation: Ceiling Height Maximum 12'-0").

### ACOUSTICAL PERFORMANCE:

Two and one-quarter inch ( $2\frac{1}{4}$ ") relocatable partitions, so designated in the partition schedule, shall have been tested by an independent testing laboratory and achieved a sound transmission class (STC) of 37.

## CLEAN-UP:

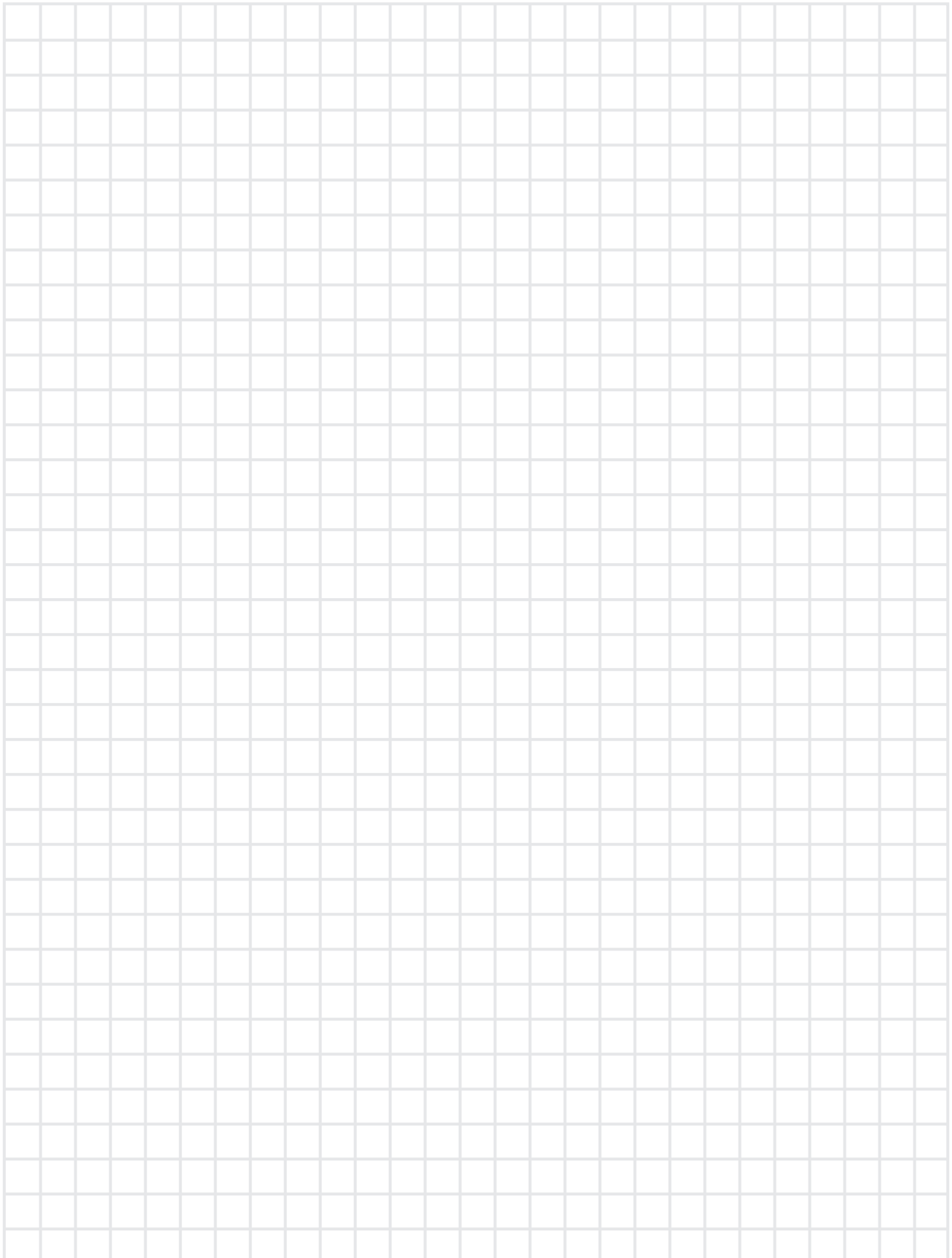
Clean all surfaces, touch up minor scratches and replace defective or damaged panels. Remove from the premises all rubbish and accumulated materials not usable. Leave work area in clean, orderly and acceptable condition.

## WARRANTY:

Installation of all materials and workmanship furnished or performed to be free of defects for a period of one year.

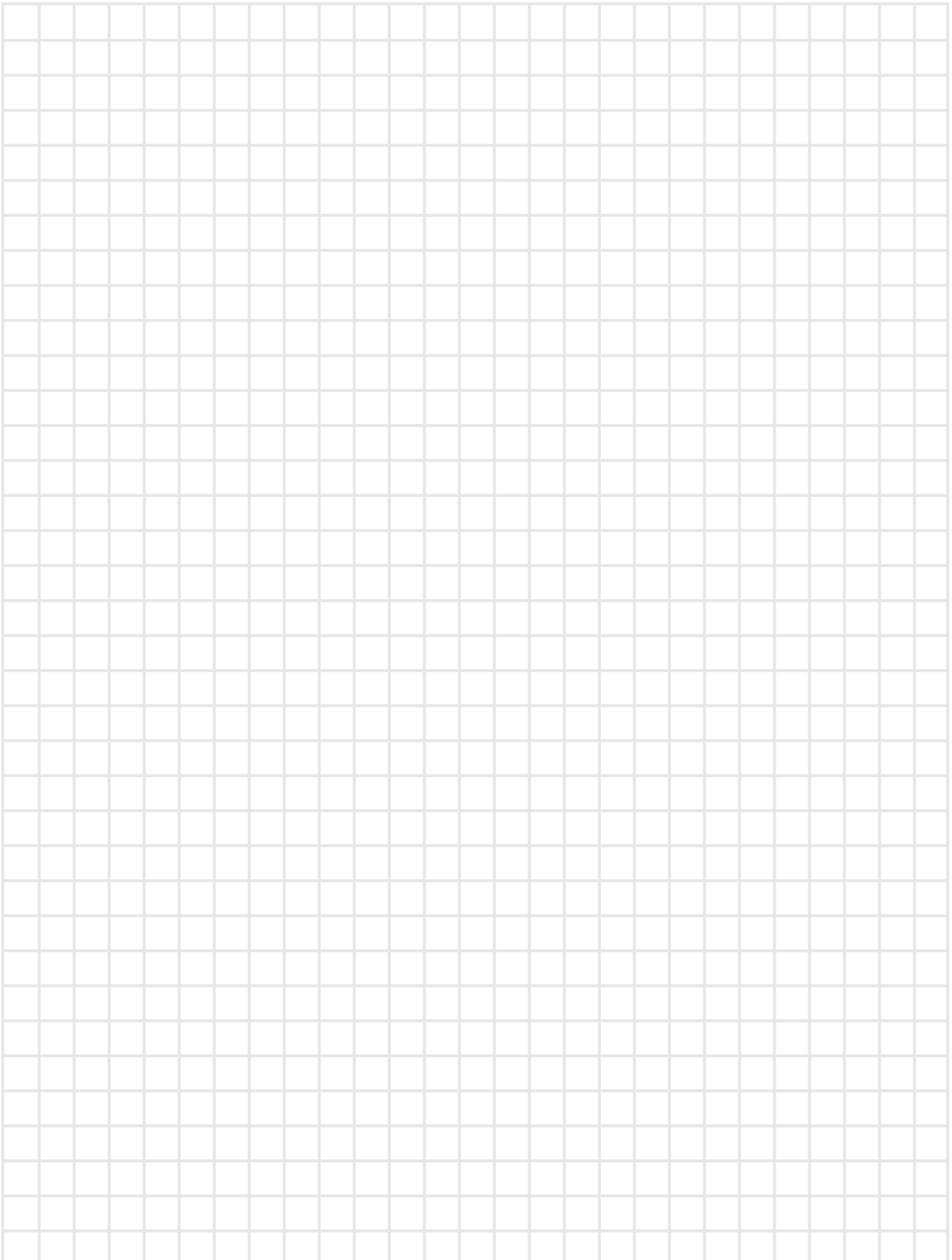
# NOTES

---



# NOTES

---

A large grid of graph paper for taking notes, consisting of 20 columns and 30 rows of small squares.

# BOOKLET REFERENCE

Product Description	INSIDE COVER	Mullion Details	
Isometric Illustration	PG. 1	19. 1½" H-Mullion	PG. 9
		19A. 2½" H-Mullion	PG. 9
Panel Details		Glazing Details	
1. Unitized Panel Section	PG. 2	20. Standard Glazing Riser w/ Snap-On Base	PG. 10
2. Tongue & Groove Panel	PG. 2	21. Glazing Head w/ Gypsum Panel	PG. 10
2A. Double Groove Panel	PG. 2	22. Glazing Sill at Floorline	PG. 10
Ceiling Details		23. Glazing Sill w/ Gypsum Panel	PG. 10
3. Ceiling Runner	PG. 3	24. Glazing Mullion w/ Gypsum Panel	PG. 11
3A. Ceiling Trim	PG. 3	25. Glazing Mullion w/ Glazing Closure	PG. 11
4. Ceiling Runner w/ Blank Closure	PG. 3	26. Seamless Effect Glazing	PG. 11
5. Ceiling Runner w/ Glazing Closure	PG. 3	27. Horizontal Glazing Sill w/ Glazing Closure	PG. 11
Floor Details		Cornice Height Details	
6. Floor Track w/ Snap-On Base	PG. 4	28. Cornice Height Partition Cap	PG. 12
6A. Floor Track w/ Opt. Glue-On Base	PG. 4	29. Cornice Ht. Part. Cap w/ Flush Door Head	PG. 12
6B. Floor Track w/ Panel Shim	PG. 4	30. Cornice Ht. Part. Cap w/ Blank Closure	PG. 12
6C. Floor Track w/ 3" Panel Lifter	PG. 4	31. Cornice Height Part. Cap w/ Glaz. Closure	PG. 12
Intersection Details		Communications Details	
7. Panel Intersection	PG. 5	32. Phone/Data Rough-In Section	PG. 13
8. Post Intersection	PG. 5	33. Electrical Rough-In Section	PG. 13
8A. 3-way Post Intersection	PG. 5	33A. Horizontal Wiring Raceway	PG. 13
9. Post Intersection w/ Radius Cap	PG. 5	Typical Door and Glazing Elevations	
Corner Details		34. Wood Door w/ Glass Transom Options	PG. 14
10. Sub Module Corner w/ Radius Snap-on	PG. 6	35. Aluminum Glass Door Options	PG. 14
10A. Sub Module w/ Square Snap-On	PG. 6	36. Full Height Wood Door & Wood Transom	PG. 14
10B. Sub Module w/ 3-Way Conversion	PG. 6	36A. Wood Door Vision Kit Options	PG. 14
11. 135° Corner	PG. 6	37. Sliding Double Aluminum Glass Doors	PG. 15
12. Post Corner w/ Blank Closure	PG. 7	37A. Simple Sliding Barn-Door	PG. 15
13. 90° Corner	PG. 7	38. Simple Pass-Thru	PG. 15
Finished End Details		38A. Operable Pass-Thru	PG. 15
14. Partition End Cap	PG. 7	39. F/H Glazing	PG. 16
14A. H-Mullion w/ Radius Cap	PG. 7	40. Chair Rail Glazing	PG. 16
Door Details		41. Clerestory Glazing	PG. 16
15. Ceiling Runner w/ Flush Door Head	PG. 8	42. Box Glazing	PG. 16
15A. Ceiling Runner w/ Recessed Head	PG. 8	Product Specifications	PG. 17
16. Door Jamb w. Gypsum Panel	PG. 8	(cont)	PG. 18
16A. Door Jamb w/ Int. Ext. at Drywall	PG. 8		
17. Door Jamb w/ Glazing Closure	PG. 9		
18. Sliding Door Hardware	PG. 9		



*Permanent Walls That Move*®

**Lic. CGC-1528644**

Toll Free 888.816.9816

**e2walls.com**

*Scan with your smart  
device to learn more*

