

# Movable Wall Systems: Flexibility Meets Sustainability



## WHITE PAPER



Private offices with full height solid wood door and transom, glass fronts and Ultrawall® sound control dividing walls.



Another configuration of the private offices with full height solid wood door and transom, glass fronts and Ultrawall® sound control dividing walls.



E2 Walls is a member of the U.S. Green Building Council®

## The green alternative to drywall

Because of their flexibility and reusability, movable wall systems from E2 Walls are ideal for your business as it changes and grows. And because of their emphasis on sustainability, our systems are ideal for the environment, too.

Compared to traditional drywall, movable wall systems reduce landfill waste and environmental hazards. Plus, they can help you achieve LEED certification, they look great and deliver outstanding ROI.

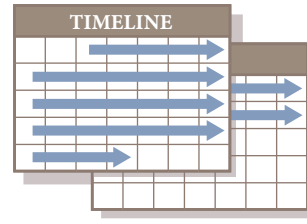
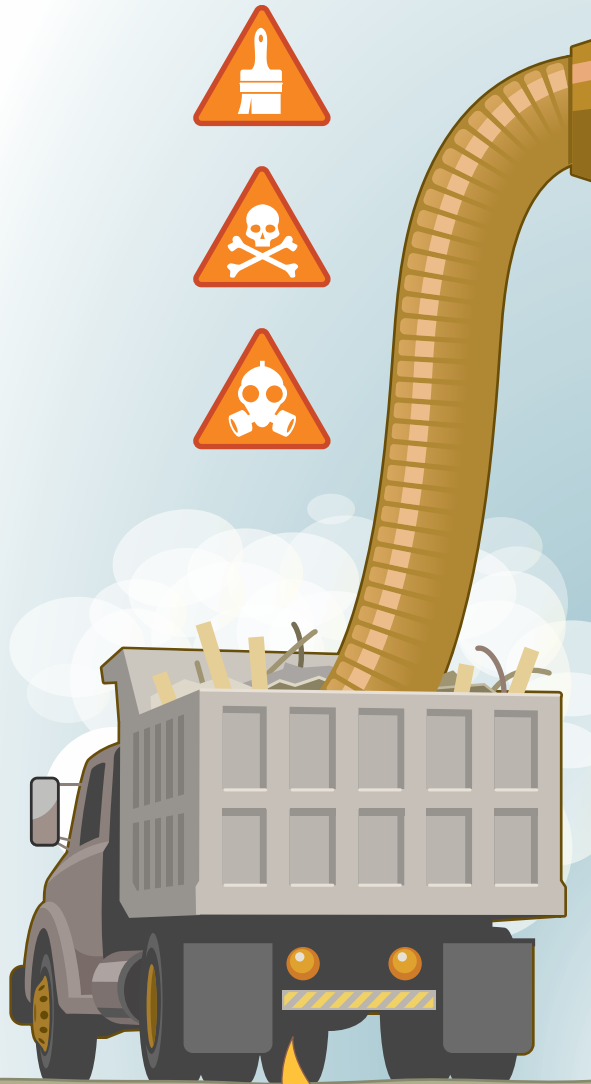
*USGBC® and the related logo are trademarks owned by the U.S. Green Building Council and are used with permission.*



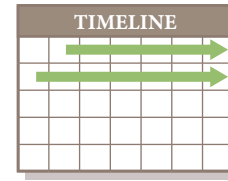
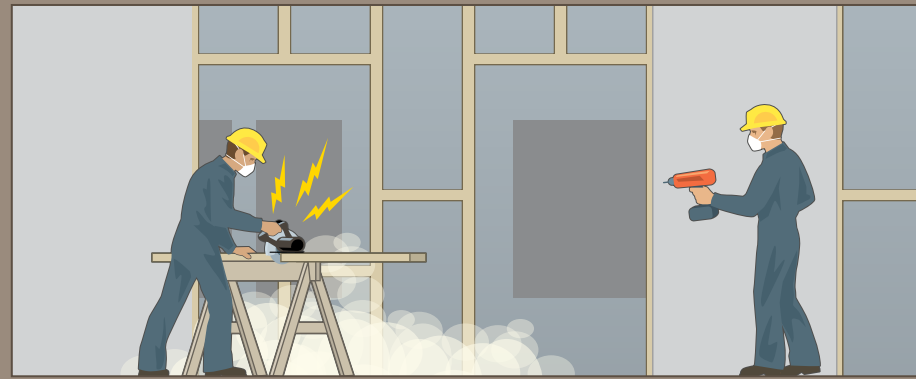
Our architectural glass wall features a curved design, decorative films and clear anodized aluminum components.



Options include Fusion Architectural Panels for environmental design with a decorative touch.

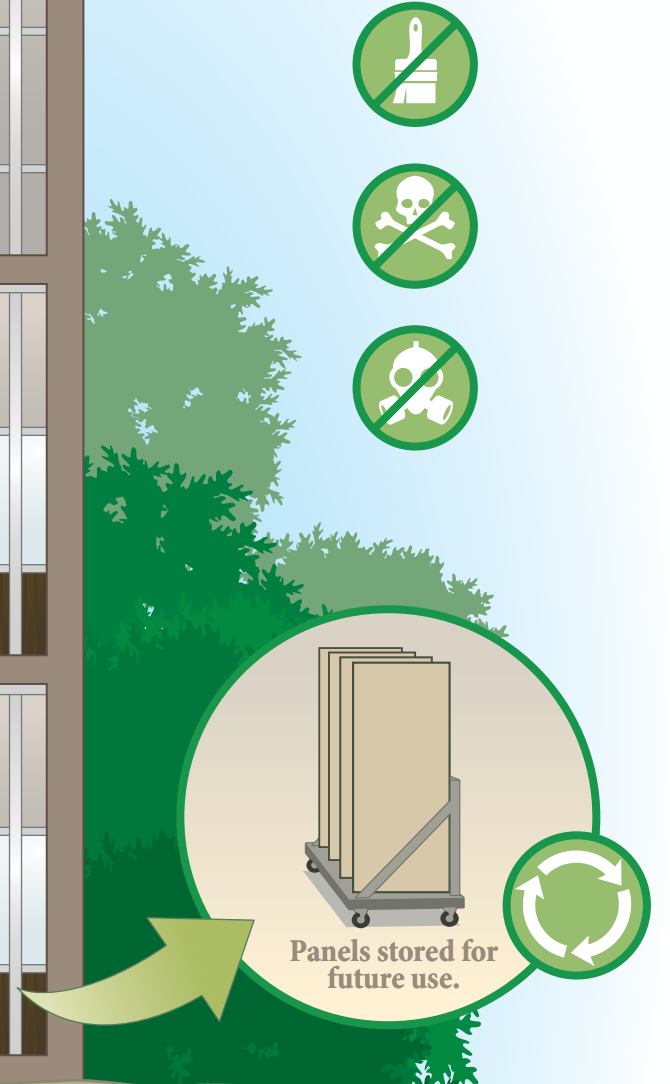


Typical drywall construction takes 4-6 weeks.



E2 Walls installation typically is 50% faster than traditional drywall construction.\*

\* On smaller jobs installation can be up to 90% faster.



Toxic waste adds to landfill.

**What happens when you remove and replace drywall to reconfigure your office space?**

The old drywall will likely go into a landfill, along with 12% of the new drywall that is wasted in installation. The EPA estimates that 24% of all municipal and solid waste is made up of construction and demolition debris, so reducing drywall waste can make a significant impact.

**Green and cleaner than drywall**

E2 Walls movable wall systems are 90-100% reusable. You simply move them from one location to another, or store them for future use. And that means no drywall in landfills. Plus, movable walls allow you to make changes to your facility with less noise, dust, debris, floor/ceiling damage and disruption to your workplace.

**Accelerate LEED certification**

Products from E2 Walls can help you earn certification from LEED (Leadership in Energy & Environmental Design), which recognizes best-in-class green building strategies and practices. LEED certification also lets you take advantage of an increasing number of local and state government incentives. Because of their innovative design and reusable materials, E2 Walls products can help you quickly satisfy prerequisites and earn points toward LEED certification.

Panels stored for future use.





Aesthetically pleasing yet functional and affordable. Series 225 components are the solution for 99% of your interior work environments.

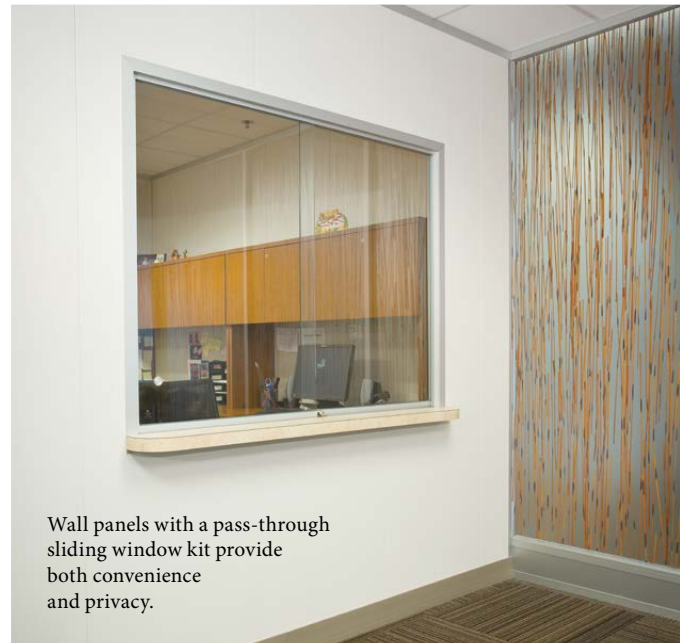


Partition walls create workspace sound control.

## Additional benefits of movable wall systems

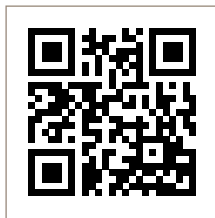
As if helping to save the planet isn't enough, there are many other good reasons to choose E2 Walls:

- Flexibility and reconfiguration — E2 Walls systems give you total freedom to reconfigure workspaces to meet your changing business needs.
- Aesthetics — Our walls are both durable and beautiful, with a wide array of vinyl, fabric, custom finishes, glass and hardware options.
- Favorable tax advantages — Because movable walls are considered tangible personal property, depreciation is more than five times faster than drywall partitions.
- ROI — Reusability allows you to get more from your investment.
- Quick turnaround — Projects can be completed in days rather than weeks or months.



Wall panels with a pass-through sliding window kit provide both convenience and privacy.

Scan with your smart device to learn more →



Permanent Walls That Move®

5692 West Crenshaw Street • Tampa, FL 33634  
Office: (813) 374-2010 • Fax: (813) 374-2006  
Toll Free: (888) 816-9816 • Email: info@e2walls.com  
Lic. CGC-1528644  
www.e2walls.com

© 2020 E2 Walls, Inc. Tampa, FL. All Rights Reserved. Printed in the U.S.A.

*“We’re committed to responsible practices and E2 Walls supports our philosophy with products that are 90-100 percent reusable.”*

— Sue Hometchko,  
VP, Facilities and Print Operations